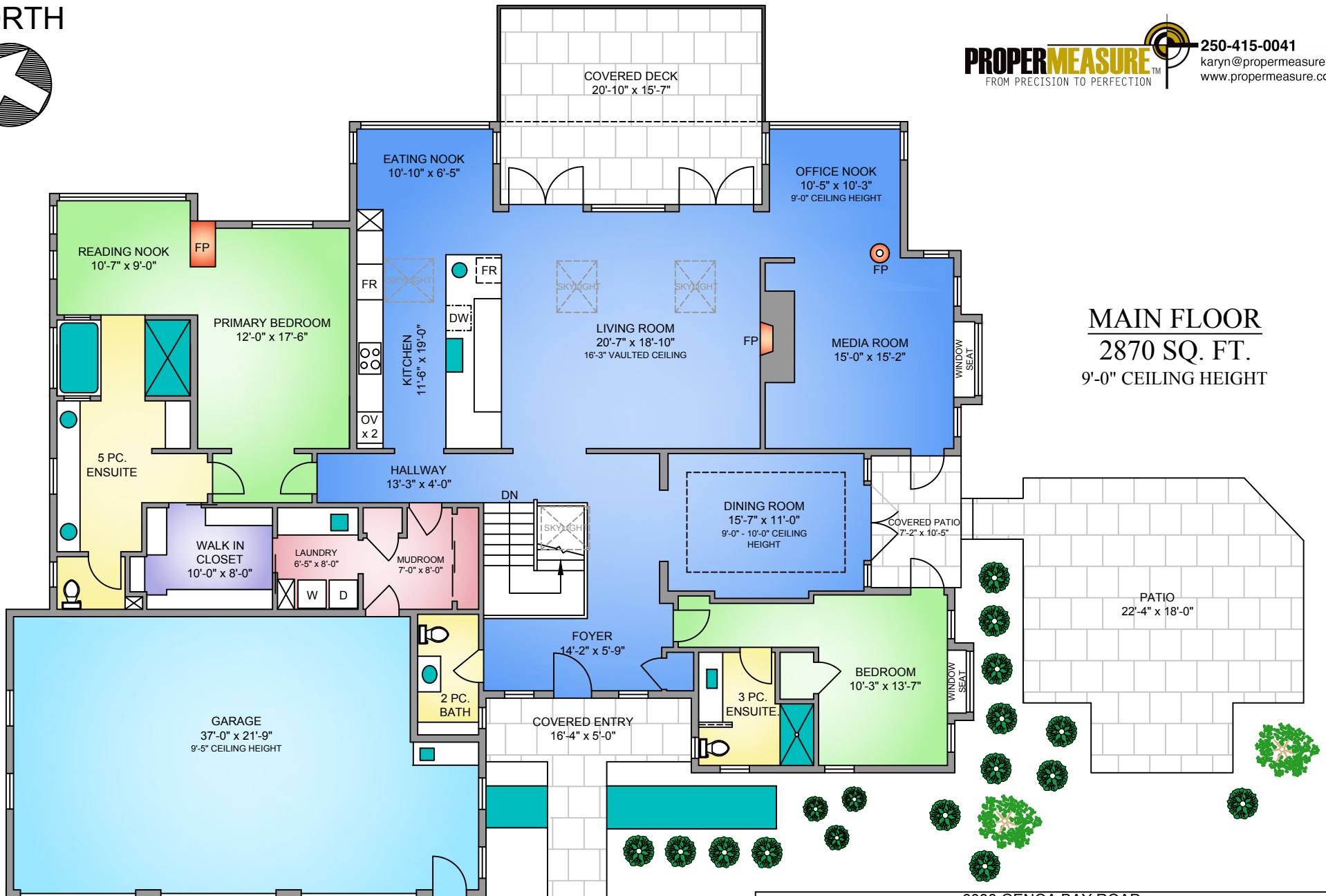
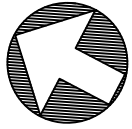
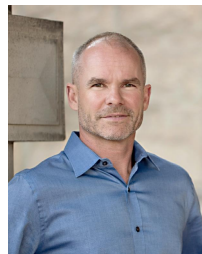


NORTH

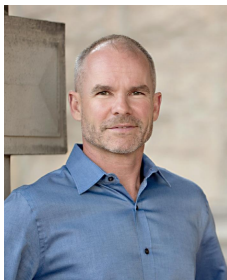


MAIN FLOOR
2870 SQ. FT.
9'-0" CEILING HEIGHT

Sotheby's
INTERNATIONAL REALTY
Canada



6088 GENOA BAY ROAD					
APRIL 25, 2022					
PREPARED FOR THE EXCLUSIVE USE OF DEAN INNES.					
PLANS MAY NOT BE 100% ACCURATE, IF CRITICAL BUYER TO VERIFY.					
FLOOR	TOTAL	AREA (SQ. FT.)			
		FINISHED	UNFINISHED	GARAGE	DECK / PATIO
MAIN	2870	2870	-	807	-
LOWER	1299	1045	254	-	768
SUITE	1080	1080	-	-	-
TOTAL	5249	4995	254	807	768



Sotheby's
INTERNATIONAL REALTY
Canada

LOWER FLOOR
1045 SQ. FT.
9'-0" CEILING HEIGHT

