



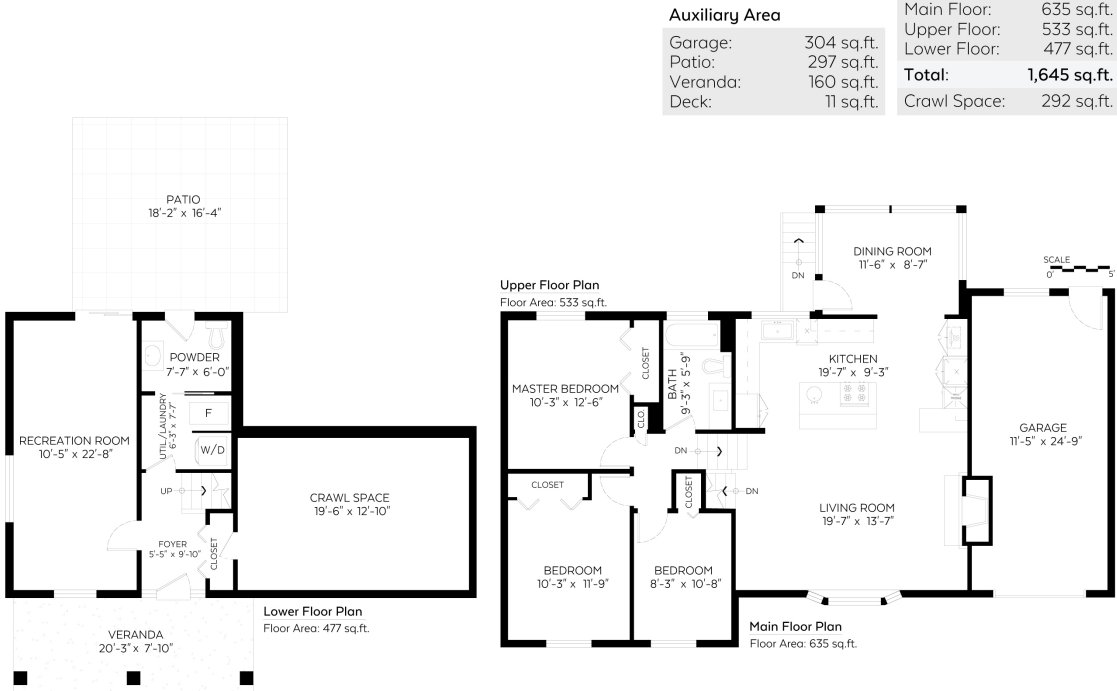
LIVE INSPIRED

6131 AZURE ROAD, RICHMOND, BC

Sotheby's | Canada
INTERNATIONAL REALTY



Sotheby's International Realty Canada does not guarantee the accuracy or feasibility of this proposed plan. Buyer to verify if important. E. & O. E.





RESORT-LIKE LIVING IN RICHMOND

The amazing Chef's Kitchen:

Includes a 4 gas VIKING burners, a Viking gas oven, steam oven & electric oven along with a Stainless steel Samsung Fridge/freezer. Wine cooler. Hot water dispenser.

Outdoor space:

Enjoy the lovely front veranda and the southwest large back garden deck located next to the lovely kidney shape swimming pool: an ideal place for your BBQ's and summer outdoor evening dinners.

The garden:

The southwest exposure garden will give you the feeling of being in a resort with its own banana and palm trees.

Bonus:

Radiant heat in the marble floor bathroom, tons of storage in the 292 sqft crawl space, security system, storage shed.

School:

Samuel Brighthouse Elementary and Richmond Secondary are a short and safe walk away.

Location:

Close to everything you need! You are minutes away from Vancouver, Richmond Hospital, the Airport, great restaurants, the brand new Minoru complex with a new swimming pool, community center, library, sports fields, parks. Richmond Centre and Brighthouse Skytrain station are also very close by.



FANTASTIC FAMILY HOME

6131 Azure Road, Richmond, BC

3 BED 2 BATH 1,645 SQ.FT. TAXES: \$4,938.91

Property ID: R2311766 | sothebysrealty.ca

\$1,688,000

Beautiful fully rebuilt house in 2010 in quiet neighbourhood with a true chef kitchen and functional open floor plan. The kitchen offers amazing Viking stainless steel appliances, such as 4 gas burners, gas oven, steam oven, separate electric oven, wine cooler. A dream for an amateur chef and for entertaining! The 3 bedrooms upstairs and the main bathroom with radiant marble floors are very comfortable. The large rec room /office is ideal for the kids to play and has been sound insulated. The southwest exposure back garden with its pool and the palm trees gives you a fabulous resort like feeling. Near Brighthouse school, new Minoru complex, Richmond centre, Skytrain and parks. A welcoming family home or a fantastic place for a couple to enjoy.

Hot Water Dispenser

Security System

Storage Shed

Swimming Pool

Vaulted Ceiling

Central Location

Private Setting

Recreation Nearby

Shopping Nearby



ANNE MAINWARING

Sales Representative

c 604.787.8601

t 604.632.3300

amainwaring@sothebysrealty.ca

annemainwaring.com

© MMXVI Sotheby's International Realty Affiliates LLC. All Rights Reserved. Sotheby's International Realty® is a registered trademark licensed to Sotheby's International Realty Affiliates LLC. An Equal Opportunity Company. Equal Housing Opportunity. Sotheby's International Realty Canada, Brokerage. Real estate agency. Independently Owned & Operated.



Sotheby's
INTERNATIONAL REALTY

Canada