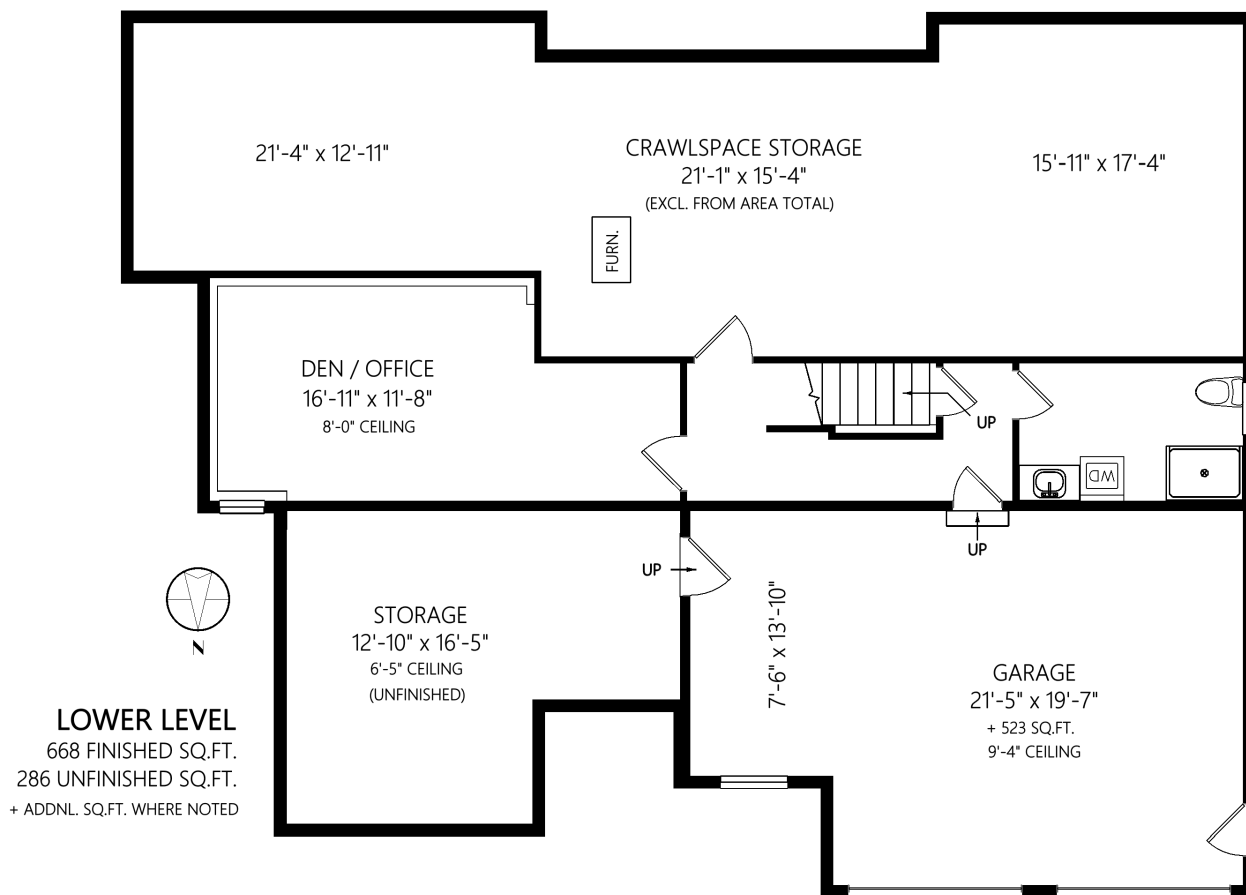


## 1245 Rockhampton Close



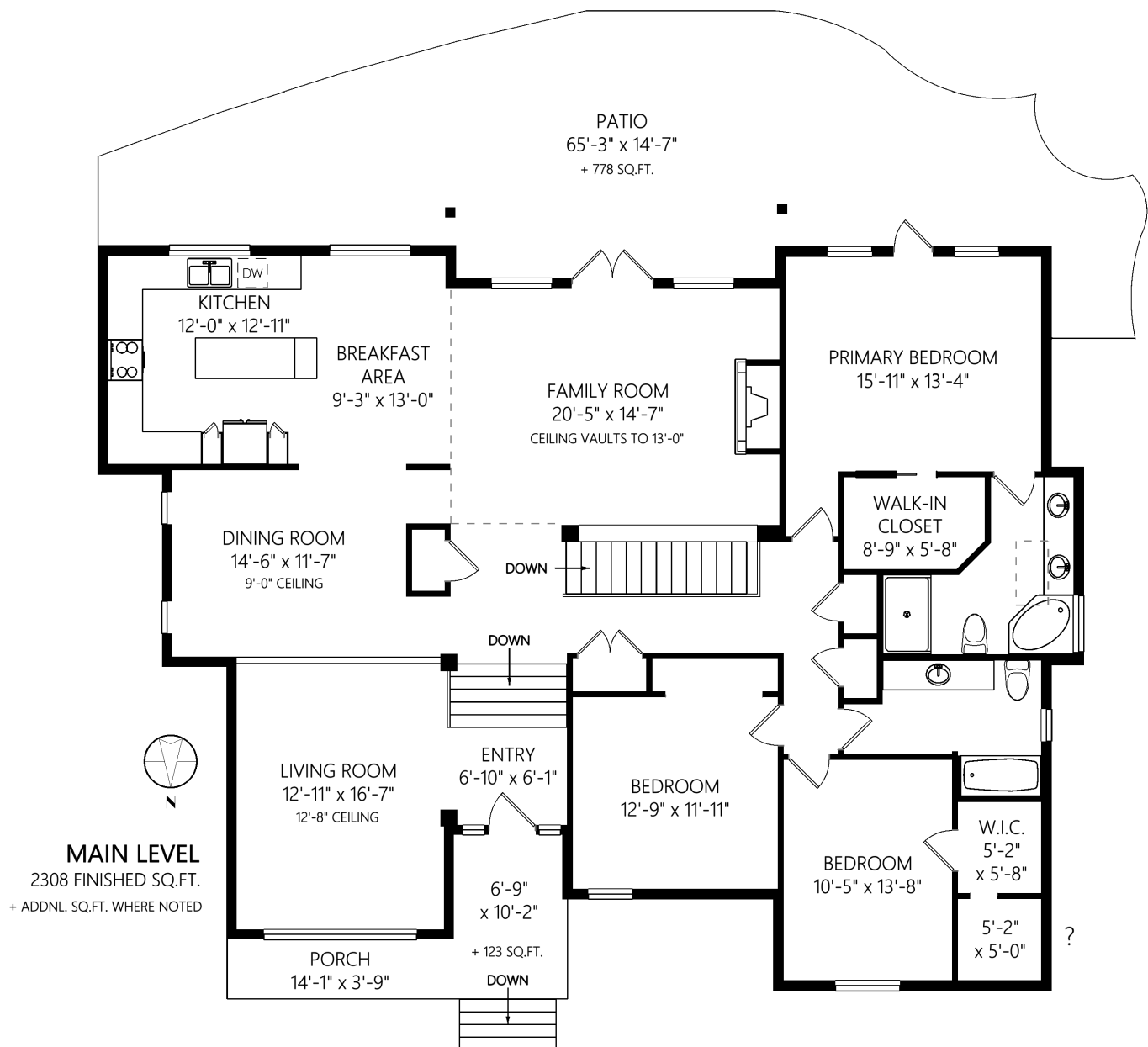
|              | Fin. Sq.Ft. | UnFin. Sq.Ft. | Total Sq.Ft. |
|--------------|-------------|---------------|--------------|
| Lower Level  | 668         | 286           | 954          |
| Garage       | 0           | 523           | 523          |
| Main Level   | 2308        | 0             | 2308         |
| <b>Total</b> | <b>2976</b> | <b>809</b>    | <b>3785</b>  |

Shown length and width dimensions are approximate.  
Area sq.ft. is representative of the on-site measurements. (1" accuracy)

**standard**  
standardres.ca

Figures, Calculations, and Representations are for indicative and promotional purpose only.  
VI Standard Real Estate Services Inc. will not be liable for any damages of any kind  
arising from the mis-use of this information.

1245 Rockhampton Close



|              | Fin. Sq.Ft. | UnFin. Sq.Ft. | Total Sq.Ft. |
|--------------|-------------|---------------|--------------|
| Lower Level  | 668         | 286           | 954          |
| Garage       | 0           | 523           | 523          |
| Main Level   | 2308        | 0             | 2308         |
| <b>Total</b> | <b>2976</b> | <b>809</b>    | <b>3785</b>  |

Shown length and width dimensions are approximate.  
Area sq.ft. is representative of the on-site measurements. (1" accuracy)

 **standard**  
standardres.ca

Figures, Calculations, and Representations are for indicative and promotional purpose only.  
VI Standard Real Estate Services Inc. will not be liable for any damages of any kind  
arising from the mis-use of this information.