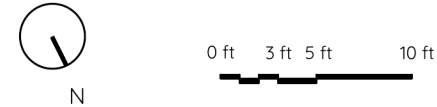
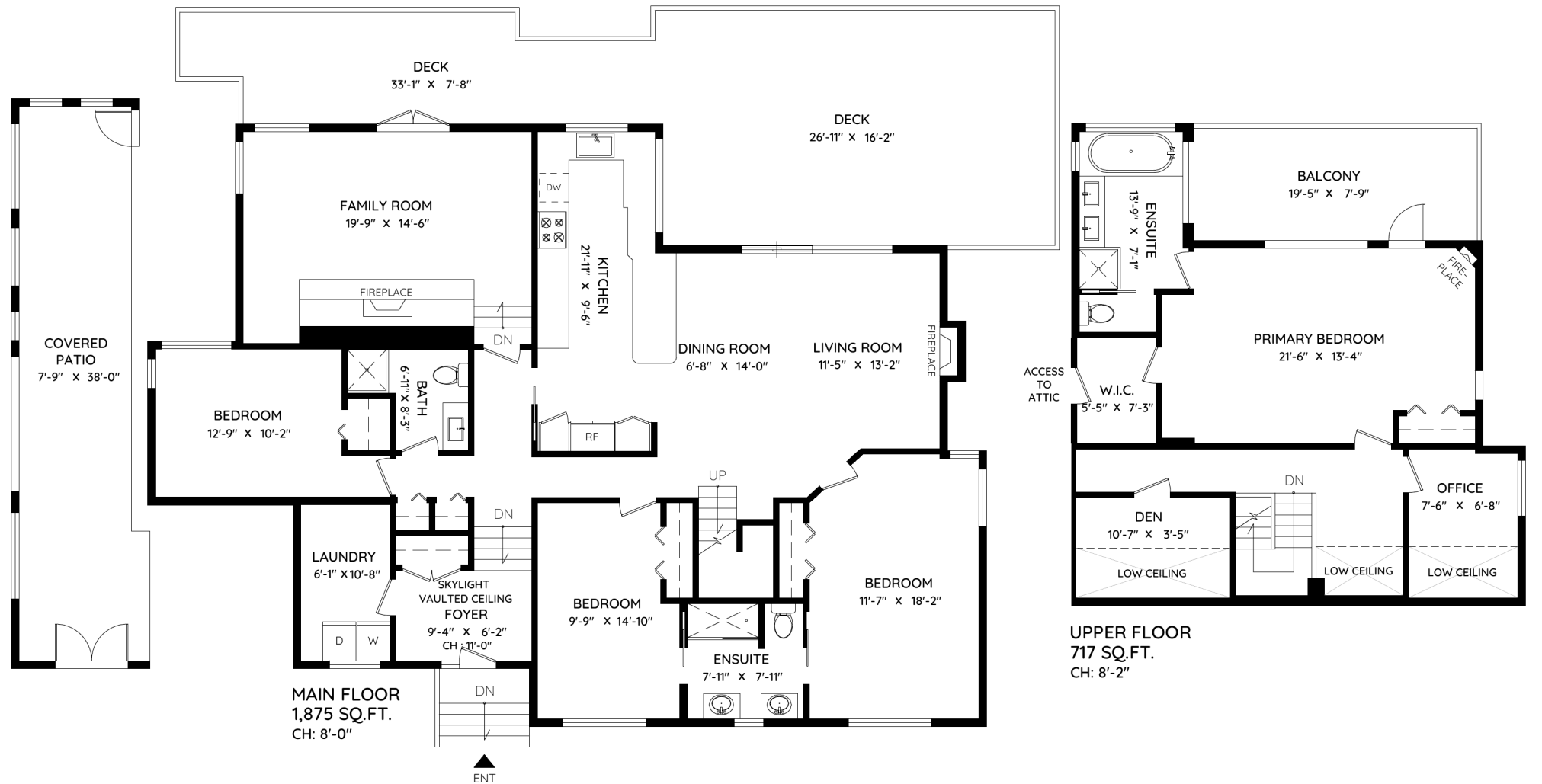


# 5703 BLUEBELL DRIVE

## WEST VANCOUVER, BC

MAIN	1,875 SQ.FT.	DECK	684 SQ.FT.
UPPER	717 SQ.FT.	BALCONY	157 SQ.FT.
TOTAL	2,592 SQ.FT.	COVERED PATIO	336 SQ.FT.
	TOTAL		1,177 SQ.FT.



The floor plan and measurements are approximate, typically within +/- 2%. These are intended strictly for advertising purposes. They may encompass unfinished areas and are not intended for architectural or construction applications. There may be variances in the numbers if there were restrictions on property access or if taking precise measurements at the time of measuring isn't feasible. E&O insured.