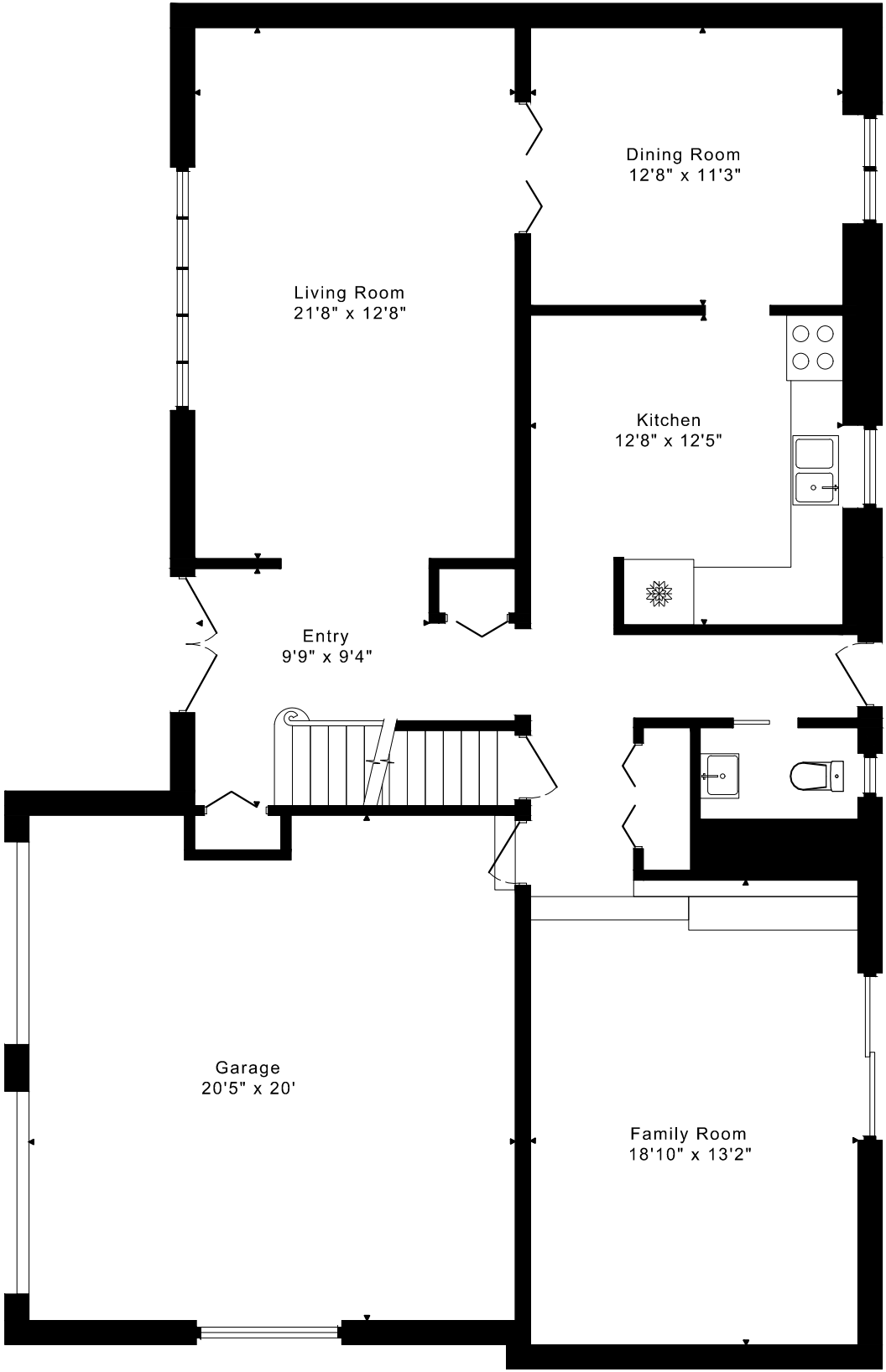
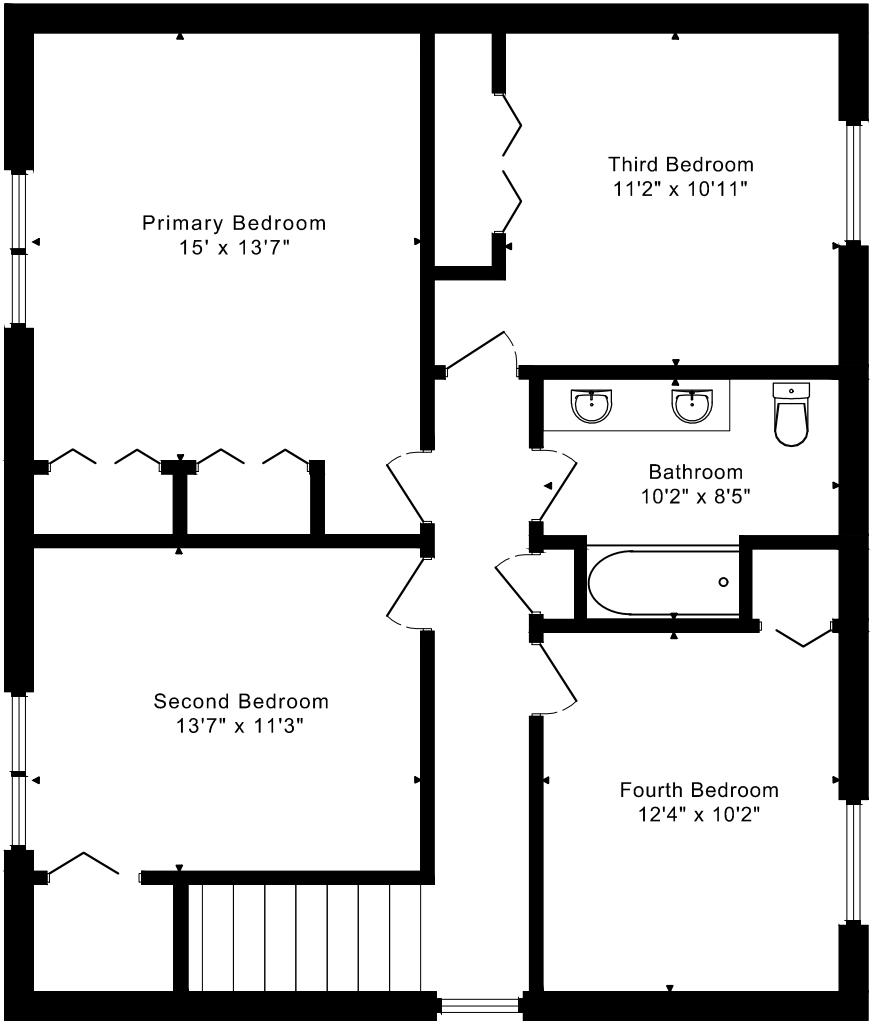


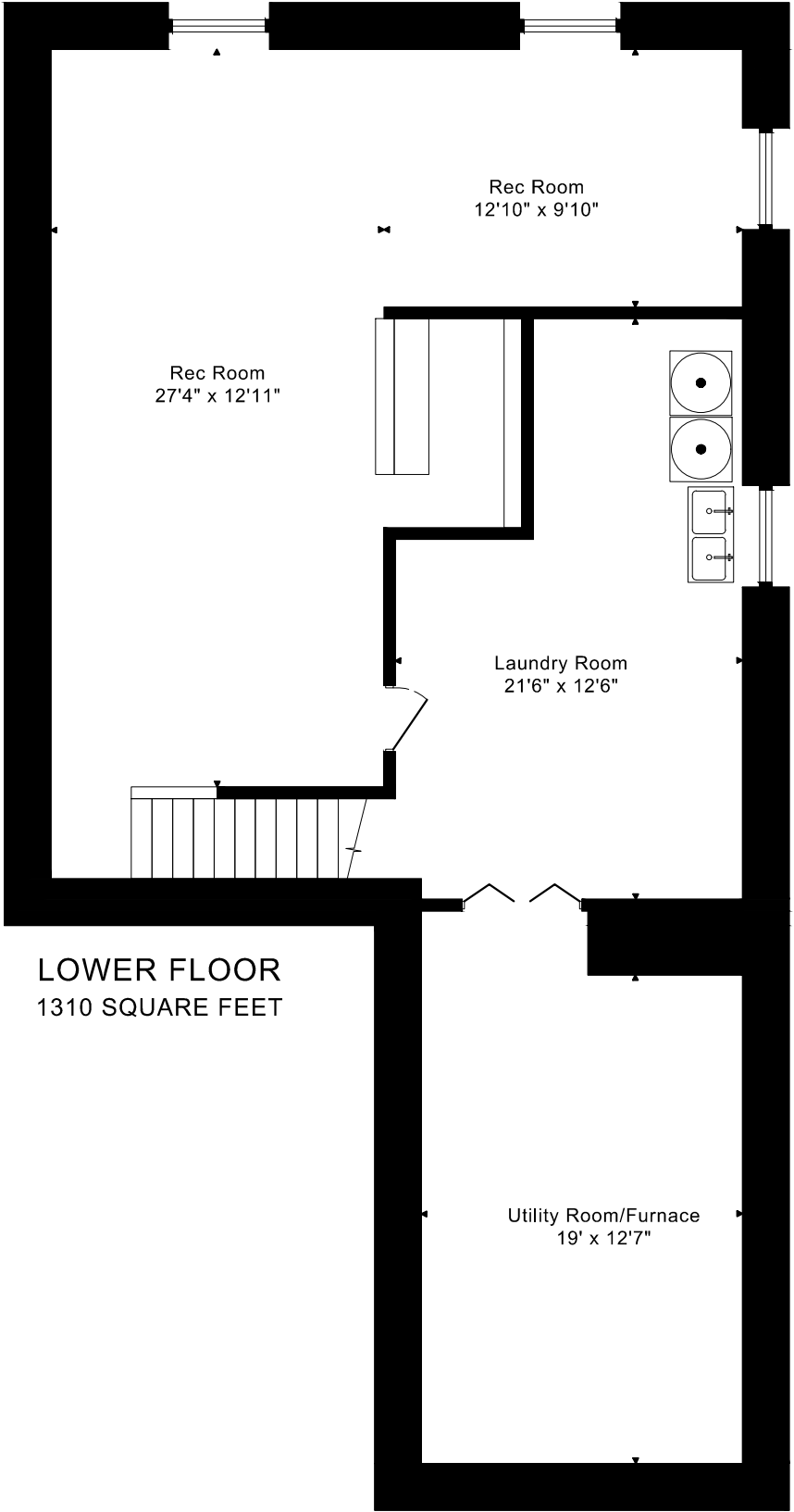
6 PINOAK ROAD  
FLOOR PLANS



MAIN FLOOR  
1300 SQUARE FEET



SECOND FLOOR  
1020 SQUARE FEET



LOWER FLOOR  
1310 SQUARE FEET

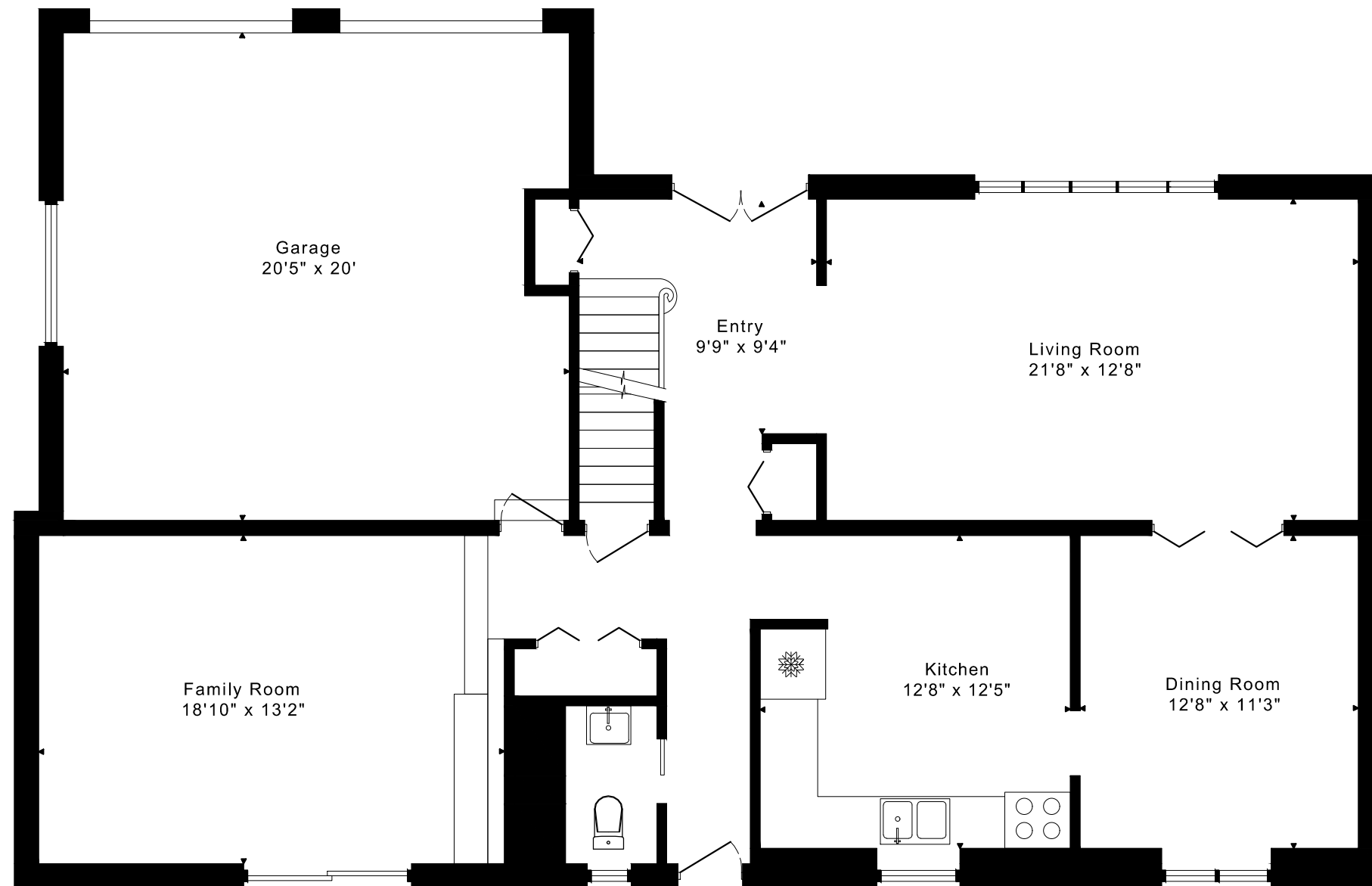
2320 sq ft + 1310 sq ft  
BELOW GRADE

CAPTURED ON: 8 APR 2024  
DIMENSIONS ARE APPROXIMATE AND SHOULD BE CONSIDERED  
ILLUSTRATIVE ONLY.

# 6 PINOAK ROAD

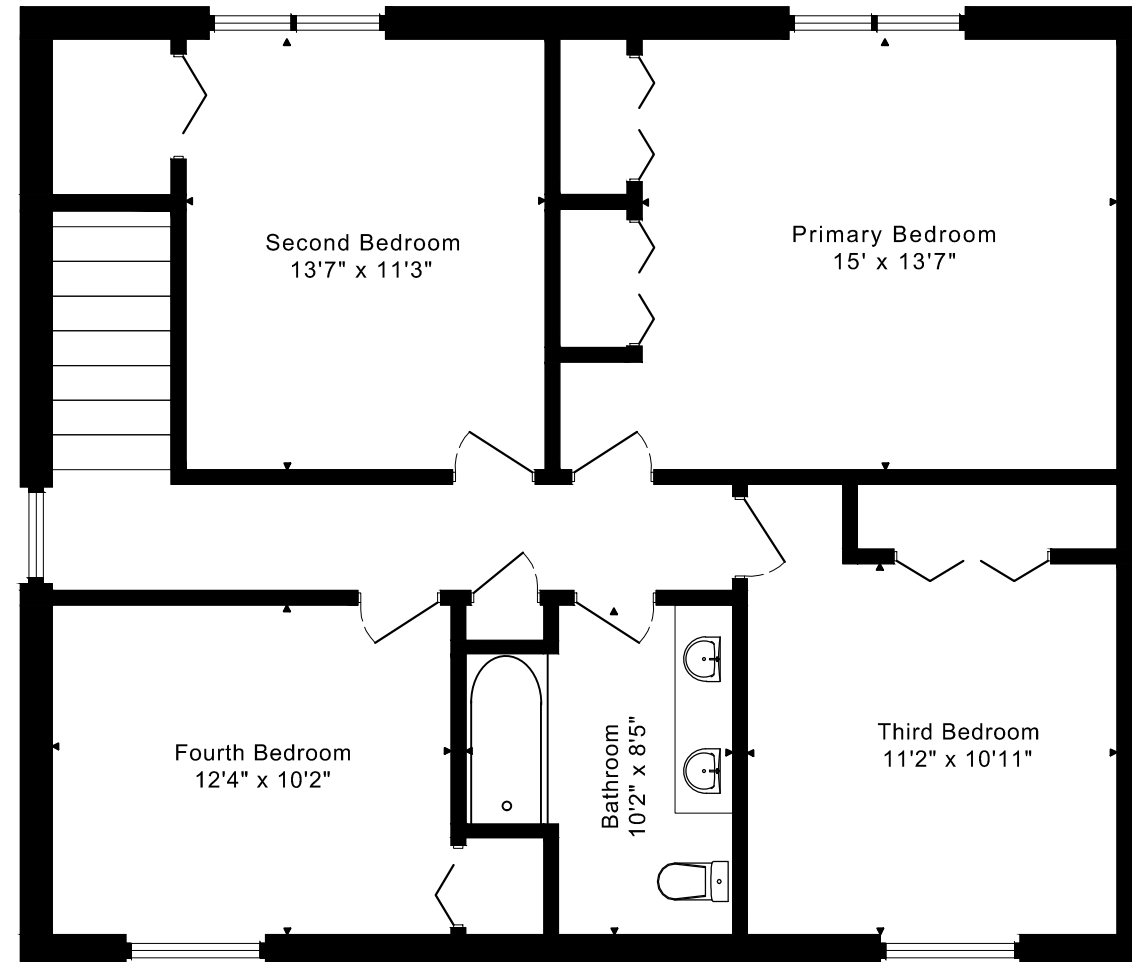
## FLOOR PLANS

MAIN FLOOR 1300 SQUARE FEET

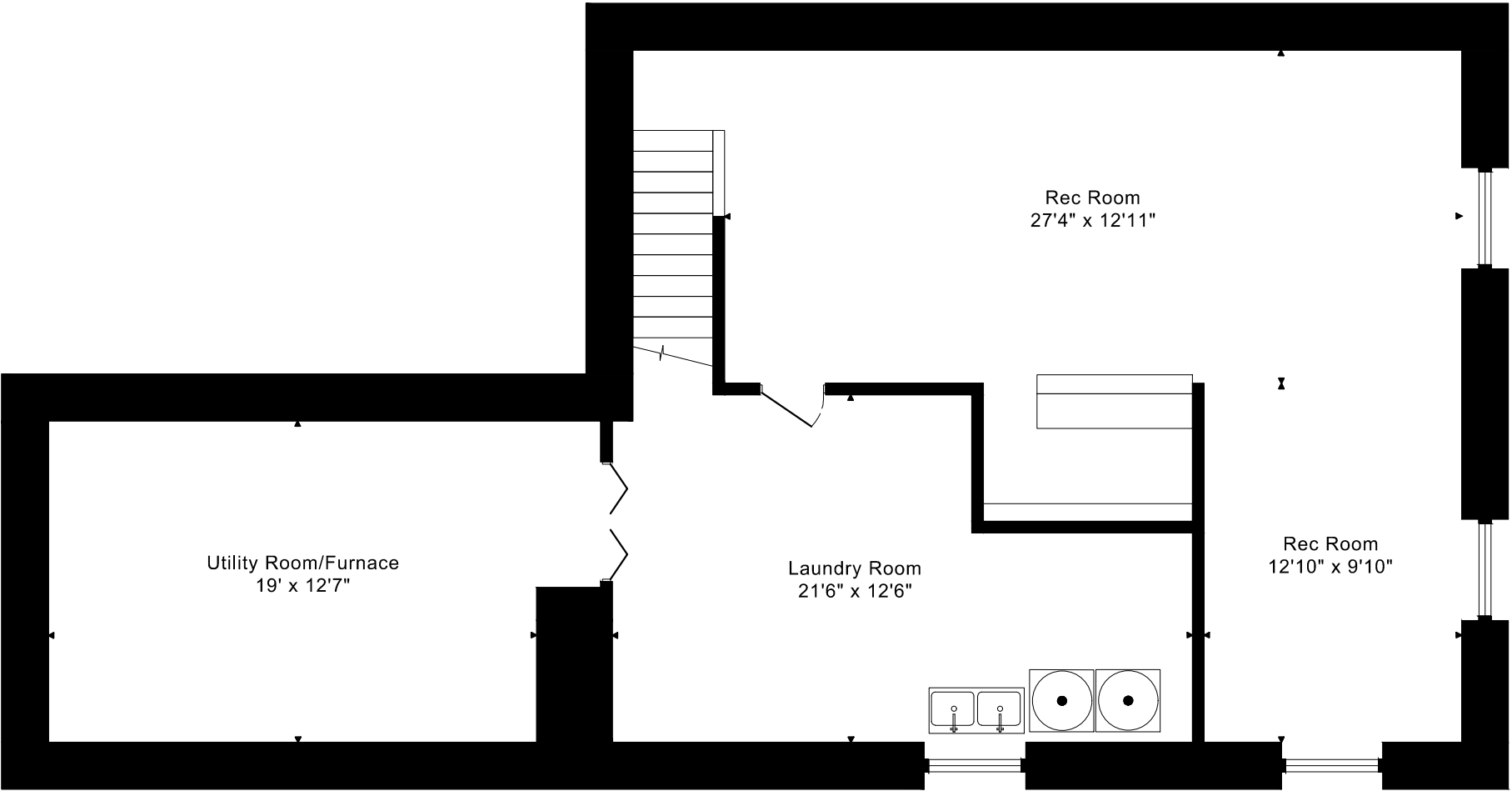


# 6 PINOAK ROAD FLOOR PLANS

## SECOND FLOOR 1020 SQUARE FEET



6 PINOAK ROAD  
FLOOR PLANS  
LOWER FLOOR 1310 SQUARE FEET



6 PINOAK ROAD ROOM MEASUREMENTS

Floor	Room	Imperial				Metric [m]	
		Length		Width		Length	Width
		Feet	Inches	Feet	Inches		
Second	Primary Bedroom	15	0	13	7	4,57	4,14
	Second Bedroom	13	7	11	3	4,14	3,43
	Third Bedroom	11	2	10	11	3,40	3,33
	Fourth Bedroom	12	4	10	2	3,76	3,10
	Bathroom	10	2	8	5	3,10	2,57
Main	Entry	9	9	9	4	2,97	2,84
	Living Room	21	8	12	8	6,60	3,86
	Dining Room	12	8	11	3	3,86	3,43
	Kitchen	12	8	12	5	3,86	3,78
	Family Room	18	10	13	2	5,74	4,01
	Garage	20	5	20	0	6,22	6,10
Lower	Rec Room	27	4	12	11	8,33	3,94
	Rec Room	12	10	9	10	3,91	3,00
	Utility Room/Furnace	19	0	12	7	5,79	3,84
	Laundry Room	21	6	12	6	6,55	3,81

The following is a disclaimer regarding the approximate nature of dimensions and floor areas listed in this document:

---

**Disclaimer:**

The dimensions and floor areas listed in this document are provided as an estimate only and are intended to be used for illustration purposes only. These measurements are not necessarily meant to be a perfect representation of the actual space.

**Notes regarding measurement methods and accuracy:**

The utilization of laser measurement technology during the 3D model capturing process at the location provides an accurate representation of floor plans, with a typical margin of error of 3-5%. For the most accurate and official measurement data, it is advised to consult official documents such as MPAC records, builder's pre-construction plans, or data from certified measurement companies.

Exterior wall thickness is included in the calculation of the overall square footage and is considered as a component of the footprint. The wall thickness measurement is obtained onsite whenever possible, or estimated in the event where obtaining onsite measurements is not possible, such as in the case of condominium buildings where wall thickness may vary throughout the building.