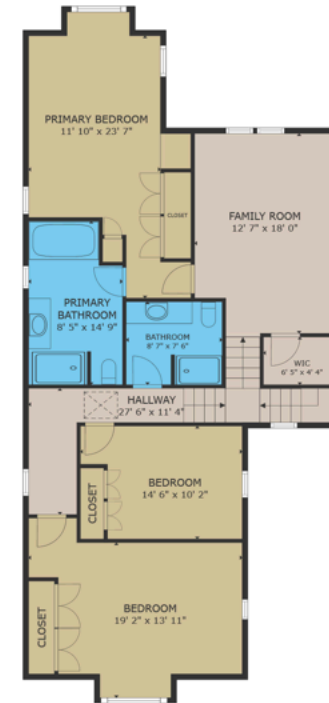


1473 NOSE POINT RD



FLOOR 1



FLOOR 2

	FINISHED SQ.FT.	UNFINISHED SQ.FT.	TOTAL SQ.FT.
FLOOR 1	1,558	0	1,558
FLOOR 2	1,281	0	1,281
GARAGE.	277	0	277
PATIO	343	0	343
TOTAL	2,838	0	2,838

**PREPARED FOR THE EXCLUSIVE USE OF
CHRIS HOBBS OF SOTHEY'S
INTERNATIONAL REALTY CANADA**

MEASURED ON: 04.02.24

NOTE This floor plan is provided by Chris Hobbs of Sotheby's International Realty Canada as a convenient reference only, and is not to be relied upon as accurate. Prospective Buyers must satisfy themselves not only of the actual measurements, but also to the status of any finished space shown on this floor plan, specifically in relation to minimum ceiling height for habitable rooms required by the BC Building Code, allowable finished floor area in relation to current zoning, and determination if space was developed with necessary municipal permits