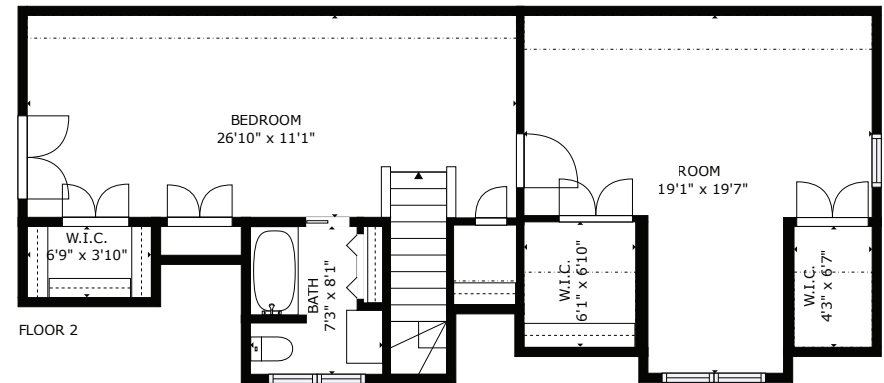
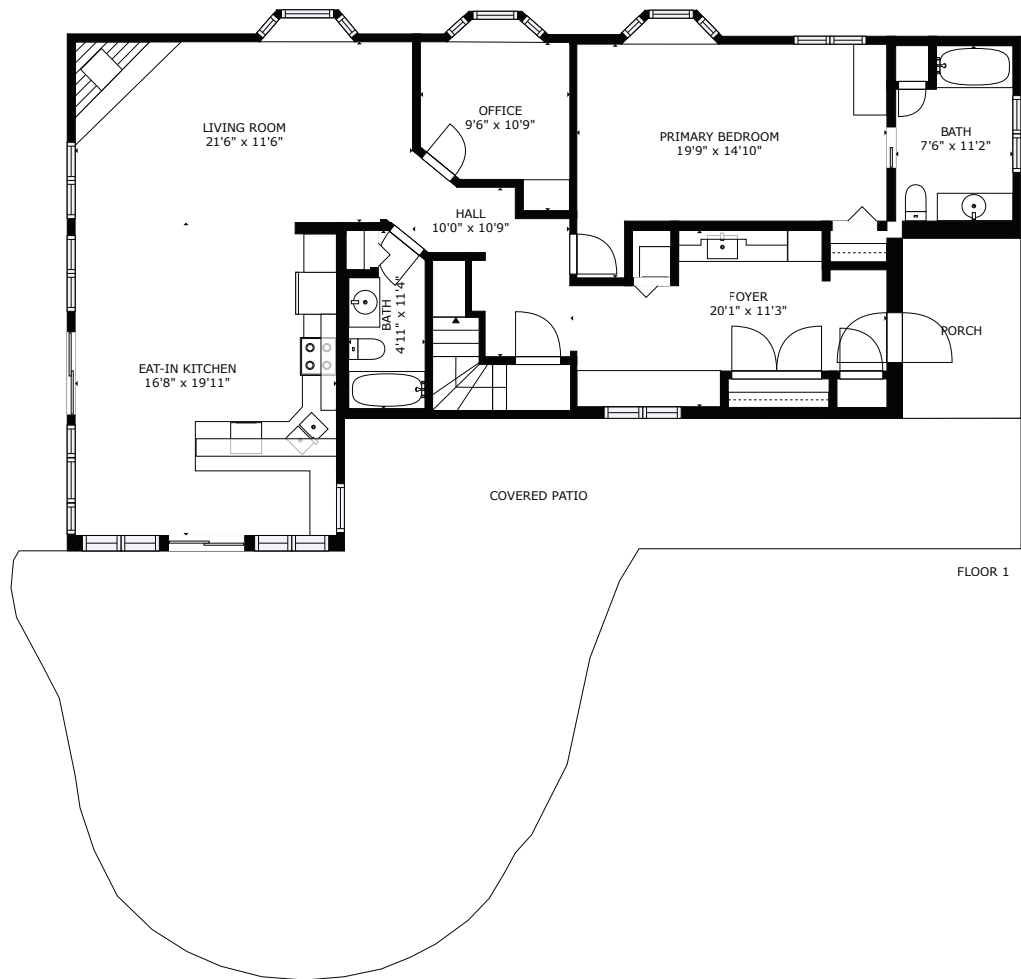


# 5487 Brooks Road - Halfmoon Bay

Sunshine Coast - BC

Sotheby's | Canada  
INTERNATIONAL REALTY



**TOTAL: 2136 sq. ft**

FLOOR 1: 1447 sq. ft, FLOOR 2: 689 sq. ft

EXCLUDED AREAS: PORCH: 86 sq. ft, COVERED PATIO: 1163 sq. ft, CRAWL SPACE: 122 sq. ft

SIZES AND DIMENSIONS ARE APPROXIMATE, ACTUAL MAY VARY.

**GINA STOCKWELL**  
Personal Real Estate Corporation

Sotheby's | Canada  
INTERNATIONAL REALTY

Mobile: 604.922.6995  
Email: [gina@ginastockwell.com](mailto:gina@ginastockwell.com)

Matterport