

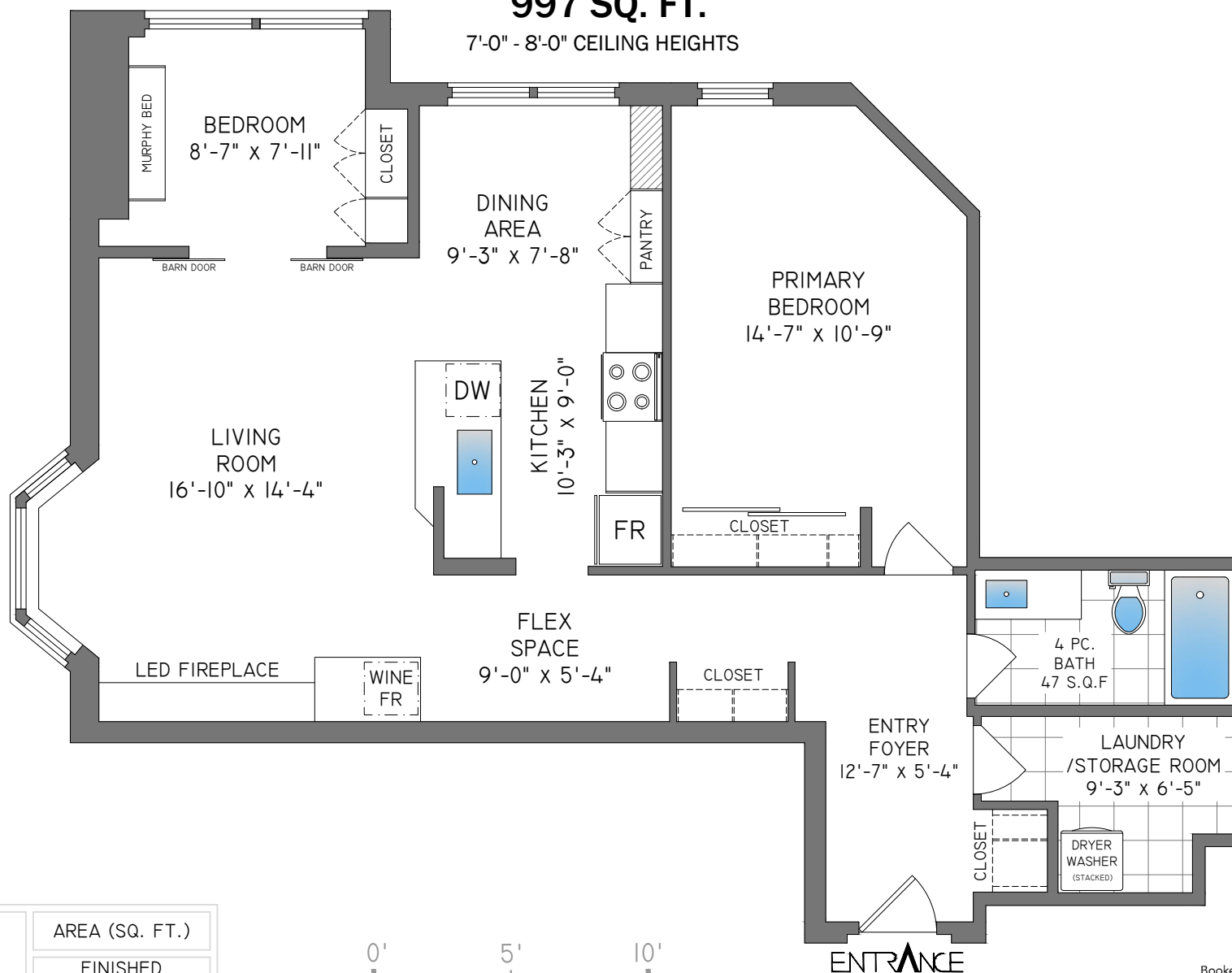


**#601 - 431 PACIFIC STREET  
VANCOUVER  
997 SQ. FT.**

7'-0" - 8'-0" CEILING HEIGHTS

**TARA E. FULTON**  
SOTHEBY'S INTERNATIONAL REALTY CANADA

tfulton@sothebysrealty.ca  
www.tarafulton.com  
604-813-4986



FLOOR	AREA (SQ. FT.)
SIXTH	997



ENTRANCE

Booked on  
the Pixilink App™



THE REPRESENTED FLOOR PLANS ARE NOT SUITABLE FOR CONSTRUCTION/ARCHITECTURAL PURPOSES.  
EVERY EFFORT HAS BEEN MADE TO REPRESENT ALL DIMENSIONS ACCURATELY, E&O. ISSUED.  
FINAL SQUARE FOOTAGE MAY BE OBTAINED FROM STRATA PLAN.