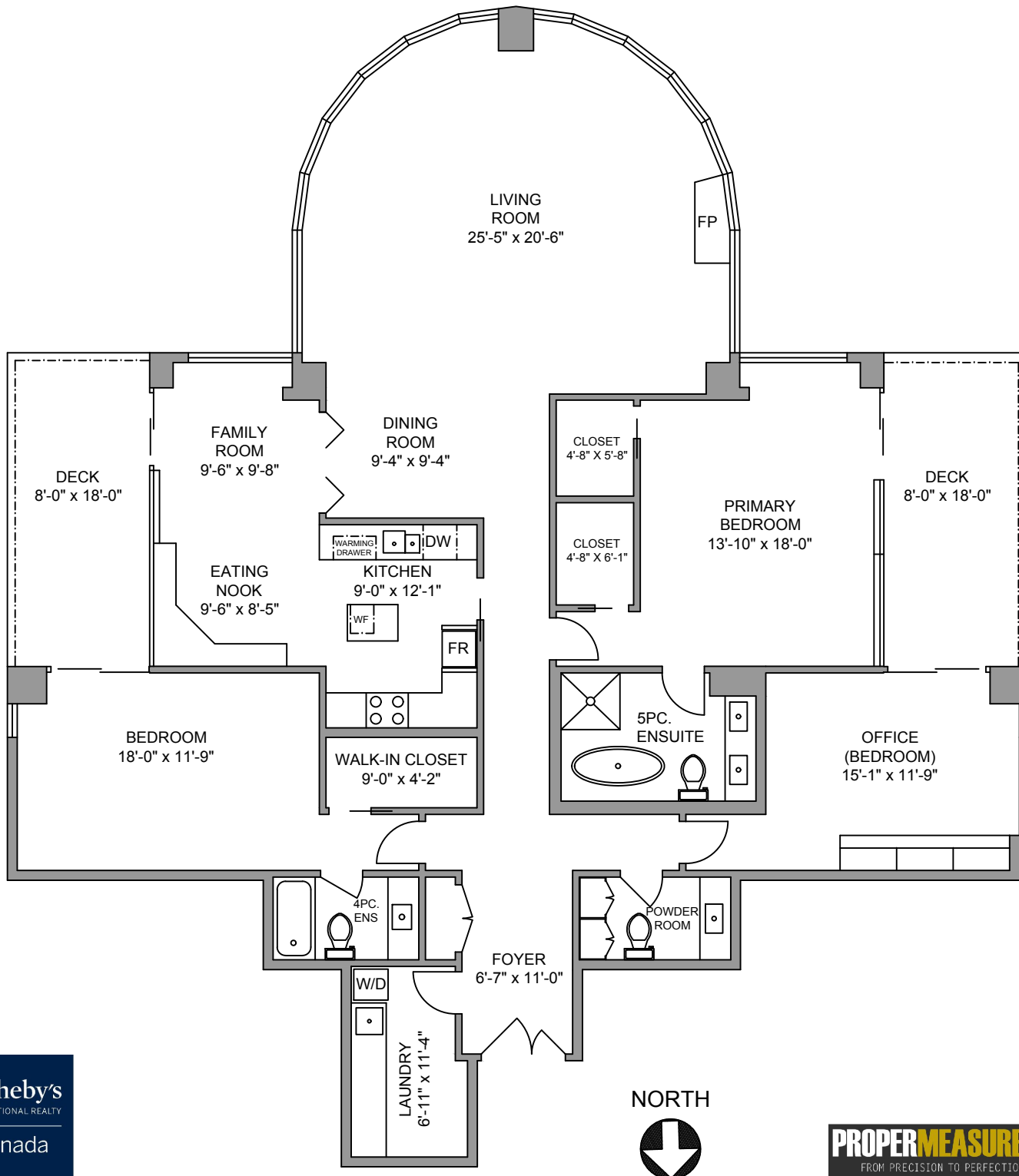


807 - 1600 HORNBY STREET

2335 SQ. FT.

8'-6" CEILING HEIGHT



807 - 1600 HORNBY STREET

MARCH 21, 2024

PREPARED FOR THE EXCLUSIVE USE OF MCKITKA, HARDY & PORTEUS GROUP.  
PLANS MAY NOT BE 100% ACCURATE, IF CRITICAL BUYER TO VERIFY.

FLOOR	TOTAL	AREA (SQ. FT.)	
		FINISHED	PATIOS
MAIN	2335	2335	300
TOTAL	2335	2335	300

Sotheby's  
INTERNATIONAL REALTY  
Canada

NORTH



PROPERMEASURE™  
FROM PRECISION TO PERFECTION