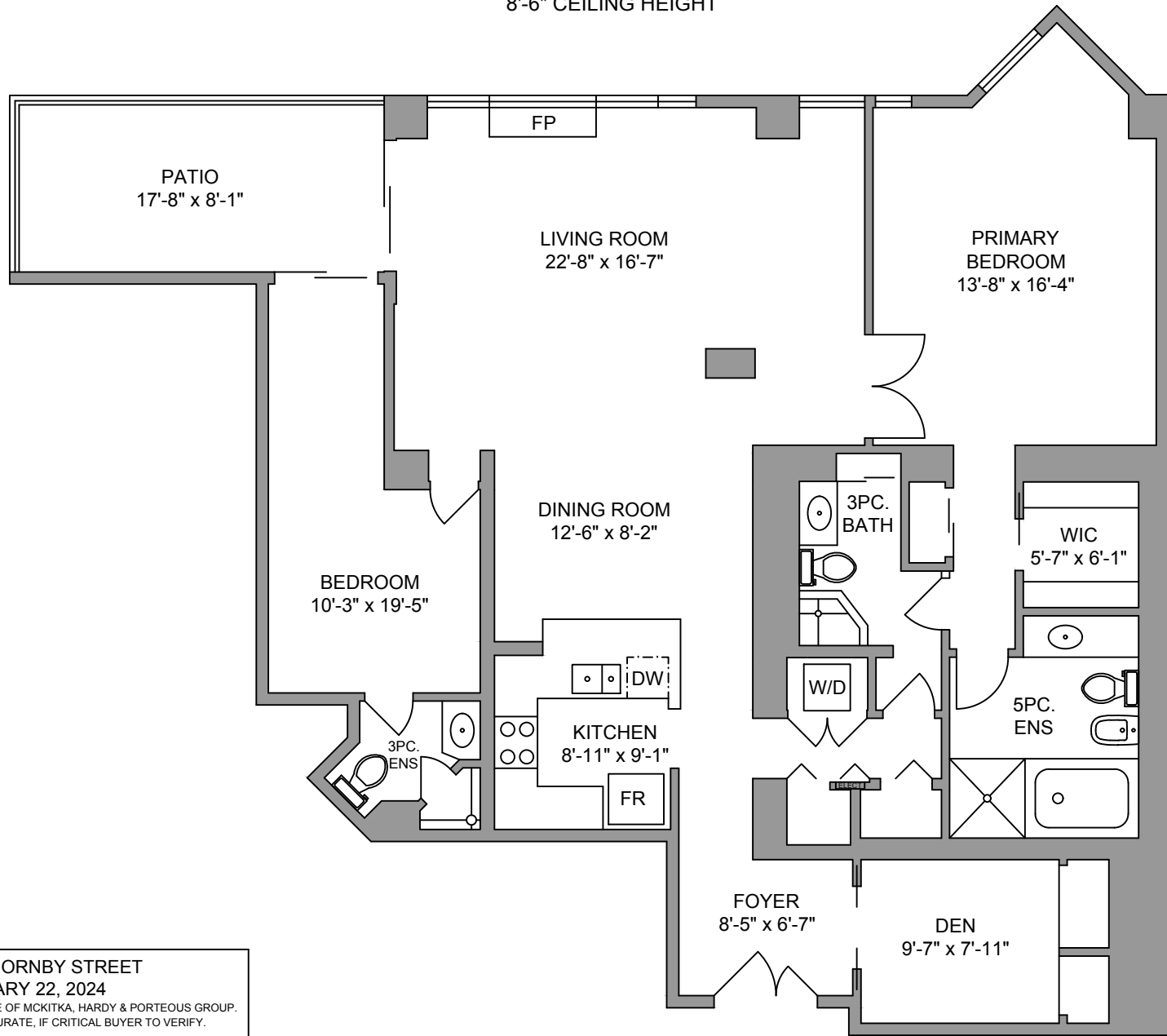


**405 - 1600 HORNBY STREET**  
**1724 SQ. FT.**  
 8'-6" CEILING HEIGHT



405 - 1600 HORNBY STREET FEBRUARY 22, 2024			
PREPARED FOR THE EXCLUSIVE USE OF MCKITKA, HARDY & PORTEOUS GROUP. PLANS MAY NOT BE 100% ACCURATE, IF CRITICAL BUYER TO VERIFY.			
FLOOR	TOTAL	AREA (SQ. FT.)	
		FINISHED	DECK / PATIO
MAIN	1724	1724	142
TOTAL	1724	1724	142

