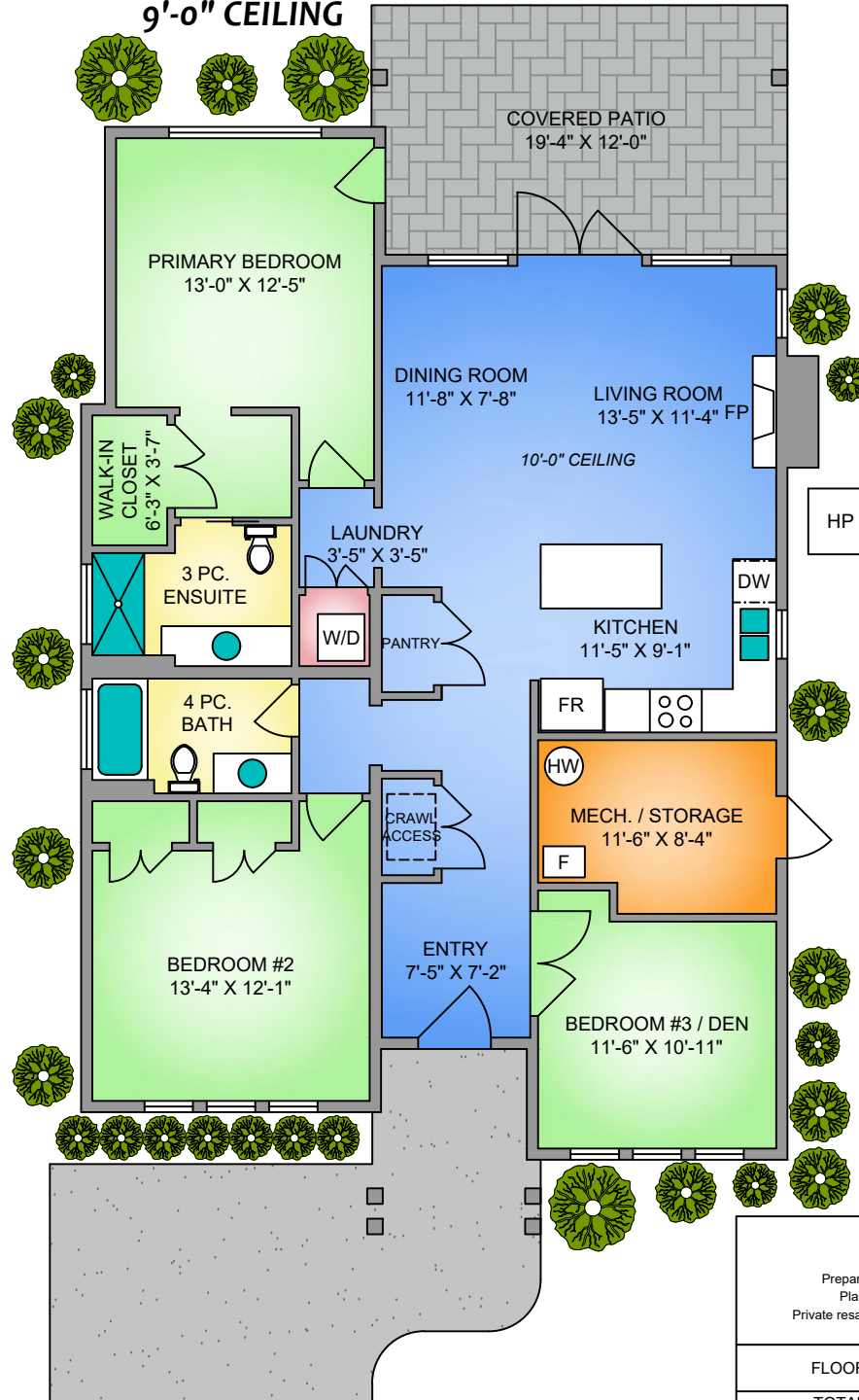


36-5251 ISLAND HWY W

1485 SQ. FT.

9'-0" CEILING



NORTH



0' 5' 10'  
SCALE

36-5251 ISLAND HWY W

FEBRUARY 13, 2024

Prepared by PROPER MEASURE MID ISLAND for the exclusive use of KEL PARRY  
Plans may not be 100% accurate. Buyer must verify any critical measurement.  
Private resale or modification of floor plans to a third party by any individual or entity other than  
Proper Measure Mid Island is strictly prohibited.

FLOOR	AREA (SQ. FT.)	
	FINISHED	DECK / PATIO
TOTAL	1485	236