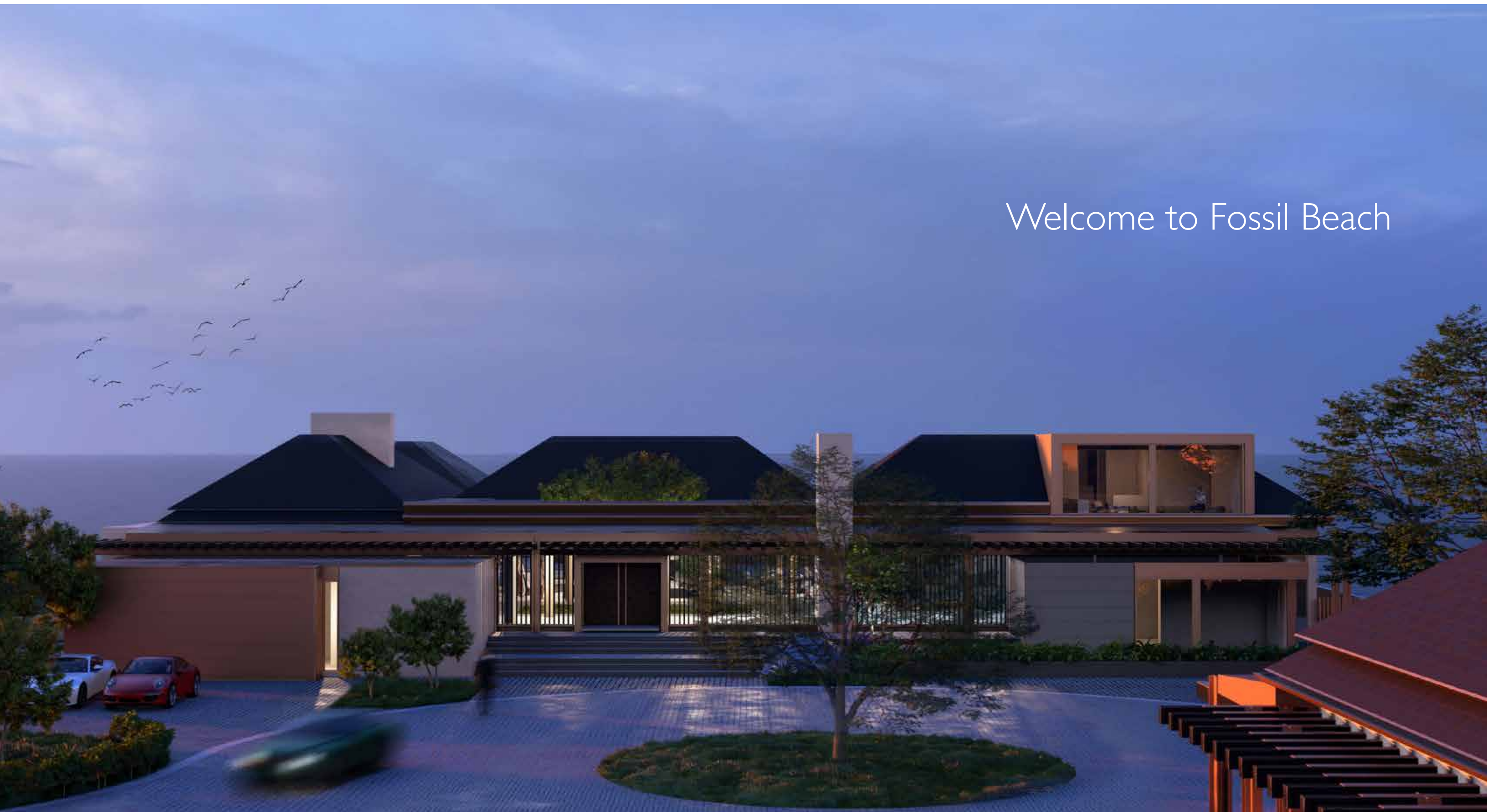




# FOSSIL BEACH

Designed by Hariri Pontarini Architects  
Mark Hartley Landscape Architects

Welcome to Fossil Beach





## The Beach House

A stunning waterfront property  
boasting 200 feet of spectacular  
Georgian Bay shoreline

Escape to your own private  
paradise this waterfront haven  
offers the perfect blend of  
luxury and natural beauty,  
making it an ideal retreat for  
those seeking the ultimate 4  
season lifestyle.



## Secluded Luxury Oasis with Expansive Waterfront

Welcome to an extraordinary and unparalleled retreat, an oasis nestled gracefully on nearly 2.5 acres of prime real estate adorned with over 200 feet of captivating, picturesque waterfront. This exclusive gated development, a masterpiece meticulously crafted and envisioned by the world-renowned Hariri Pontarini Architects, extends a rare and exquisite opportunity for discerning individuals to immerse themselves in the true epitome of opulent luxury living.

### Architectural Masterpiece:

Immerse yourself in the allure of open-concept living with a touch of Balinese inspiration. Two distinct homes grace the landscape, boasting a combined 18,000 square feet of exquisite design. The larger residence, an impressive 12,000 square feet, stands as a testament to modern opulence, while a more intimate 6,000 square feet home complements the grandeur with bespoke charm, creating a harmonious blend of grandiosity and personal allure that resonates throughout the entire living experience.

### Nature’s Symphony:

Surrounded by a tranquil setting, this property invites you to indulge in the beauty of nature while being in close proximity to an array of recreational activities. From skiing and golf to cycling and hiking, the options are endless for those seeking both serenity and adventure.

### Unrivalled Amenities:

For the discerning buyer, the property boasts a TC approved helicopter landing pad, ensuring convenient access to and from this idyllic haven. In addition to the existing homes, the package includes a vacant lot, providing an opportunity for the creation of an additional residence, a tennis court, or a pool – the possibilities are as vast as the landscape itself.

### Prime Location:

Strategically situated, this estate offers a perfect blend of seclusion and accessibility. Whether you’re a nature enthusiast or a luxury connoisseur, this property caters to your every need.

This is not just a home; it’s a lifestyle. Seize the chance to own a piece of architectural brilliance, surrounded by the serenity of nature, and make this exclusive estate your own.

### Panoramic Views:

Wake up to breathtaking sunrise views over the pristine waters of Georgian Bay.

### 200 Feet of Waterfront:

Enjoy direct access to the beach, creating a seamless connection between indoor and outdoor living.

### Chic Open Plan Design:

Indulge in the epitome of lakeside elegance at “The Beach House.” With a stylish aesthetic, this residence seamlessly marries modern comfort with the timeless charm of lakeside living. Every detail reflects a commitment to luxury and relaxation, creating a haven where the beauty of the lake becomes an integral part of your everyday experience.

### Spacious Outdoor Living:

Delight in sun-kissed days on the expansive deck, perfect for entertaining or simply soaking up the ambiance of Georgian Bay. Serenity and Privacy: Nestled in a tranquil setting, this property offers a retreat from the hustle and bustle, providing the ultimate in privacy and relaxation.

### Gourmet Kitchen with Water Views:

The heart of the home, the kitchen is equipped with top-of-the-line appliances and offers stunning views of the bay.

### Luxurious Bedrooms:

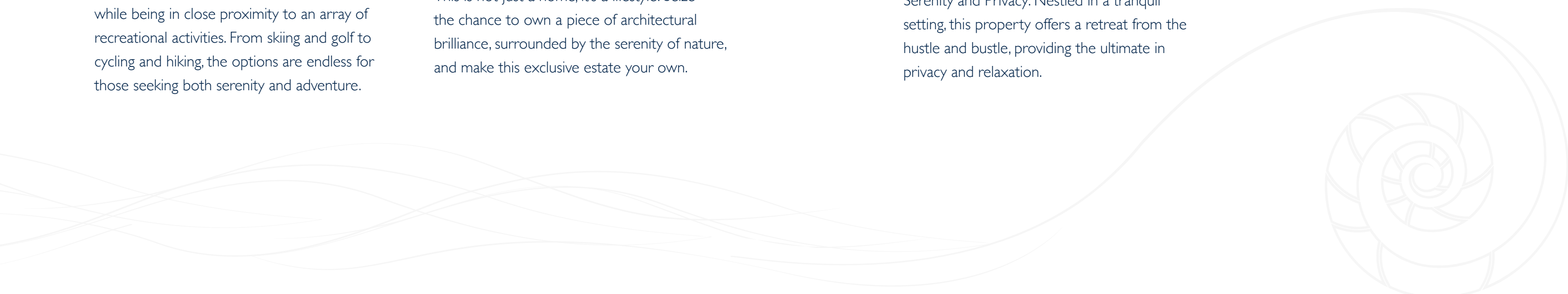
Unwind in the comfort of well-appointed bedrooms, each designed to capture the essence of coastal living.

### Waterfront Activities:

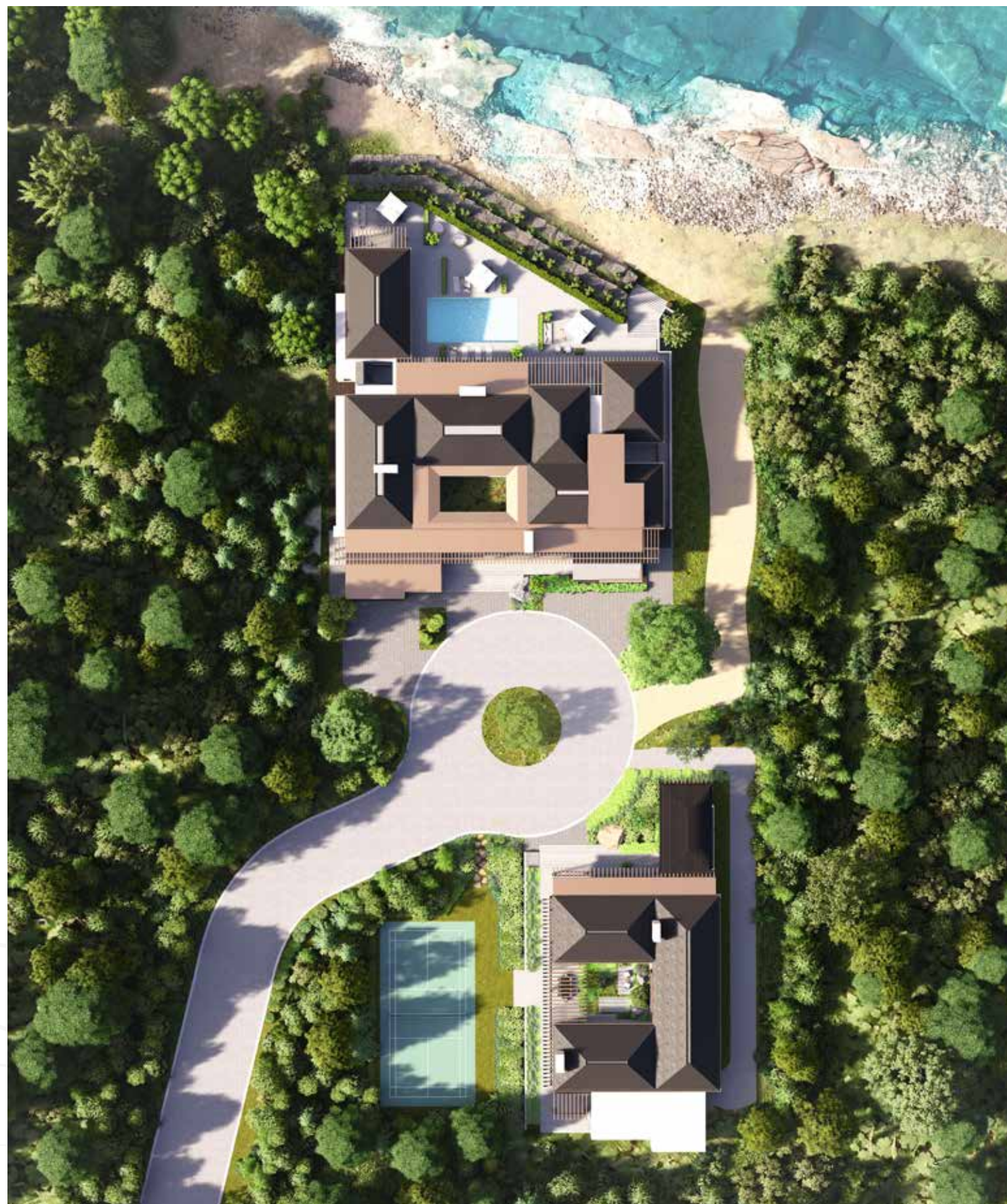
From kayaking to beachfront bonfires, the possibilities for waterfront enjoyment are endless.

### Proximity to Amenities:

While offering a secluded feel, “The Beach House” is conveniently located near local amenities, ensuring both convenience and tranquility.







Nestled within private landscaped grounds, this unparalleled lakefront estate is a masterpiece of luxury living. Boasting not one, but two spectacular homes, “The Beach House” and the “Guest House,” this property redefines lakeside opulence.

With a total of 18,000 sq ft of meticulously designed living space and a vacant lot that comes with a TC approved helicopter landing pad, the potential for this estate is truly limitless.

#### The Beach House (12,000 sq ft):

- **Chic Design:**  
Modern comfort meets lakeside charm in this breathtaking residence.
- **Panoramic Lake Views:**  
Enjoy unobstructed views of the lake from every corner of this sprawling beachfront home.
- **Expansive Outdoor Living:**  
Immerse yourself in nature with a private beach, perfect for waterfront activities.
- **Gourmet Kitchen and Luxurious Bedrooms:**  
Designed with both functionality and elegance in mind.

#### The Guest House (6,000 sq ft):

- **Elegant Accommodations:**  
A luxurious space for guests or extended family, offering privacy and comfort.
- **Thoughtful Design:**  
Meticulously crafted interiors with high-end finishes for a refined living experience.
- **Private Patio:**  
A serene outdoor space for relaxation and enjoyment.

#### Vacant Lot Versatile Possibilities:

Imagine the potential of this vacant lot, whether it becomes a tennis court, a sparkling swimming pool retreat, the site for a third exquisite home, or remains as a TC approved helicopter landing pad.

#### Exclusive Helicopter Access:

A rare feature, is the TC approved helicopter landing pad offering convenient access to and from this remarkable estate.

**Opulent Living, Endless Possibilities:** This estate is not just a home; it's a lifestyle. Whether you choose to relax by the water's edge, entertain guests in grand style, or explore the myriad possibilities of the vacant lot, this property invites you to create your own lakeside paradise.

Sunlit elegance in every room with soaring vaulted ceilings, offering a spacious, airy feel. Experience the luxury of natural daylight throughout, defining a home bathed in perpetual brightness and warmth.







Embrace serenity with an open central courtyard, a focal point visible from every angle. Seamless integration of nature and architecture, creating a tranquil oasis within your home.



Experience modern luxury  
in this open-concept  
masterpiece, seamlessly  
blending kitchen, living, and  
dining areas. Spectacular  
views of Georgian Bay  
grace every space, while  
a swimming pool and  
courtyard offer both  
relaxation and entertainment,  
elevating your lifestyle to  
new heights



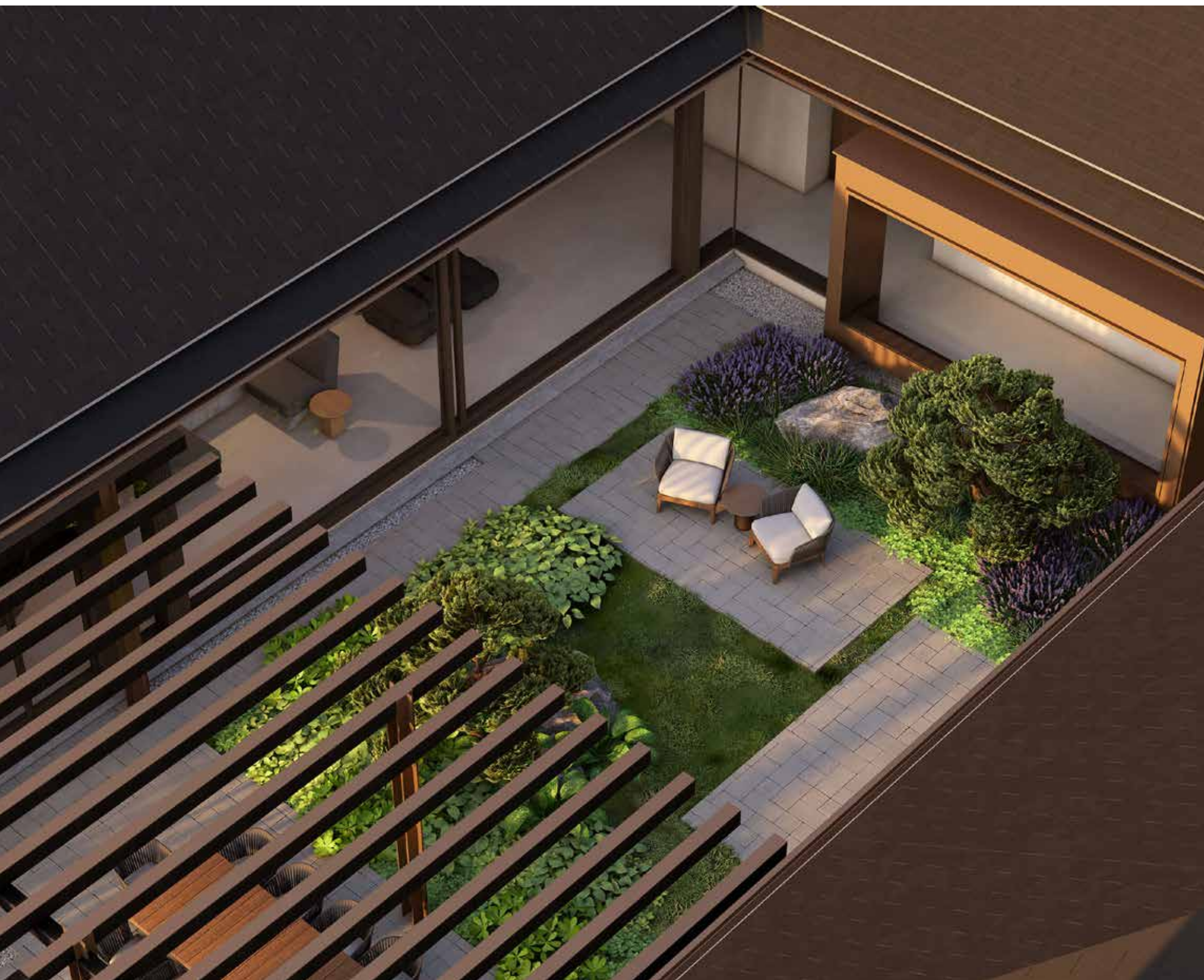
The Beach House  
Floor Plans



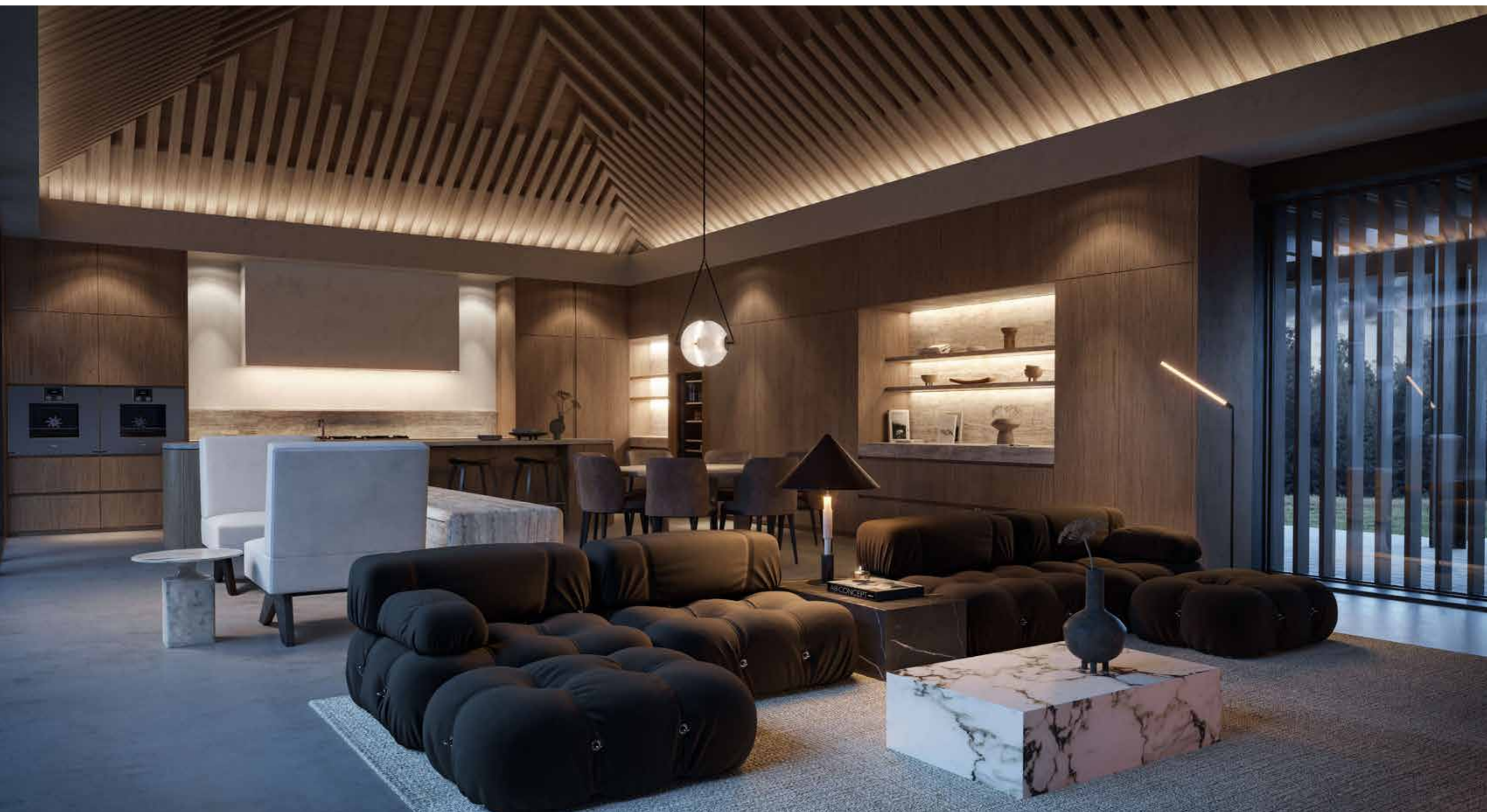


## Guest House

The Guest House, 6,000 sq ft, exudes Bali-inspired elegance seamlessly merging with the charm of the Beach House.



Indulge in outdoor luxury with a fully equipped kitchen, cozy fireplace, and expansive living space - perfect for relaxation, enjoyment, and entertaining under the open skies.



Immerse yourself in opulence with high-end luxury finishes adorning every room. Each detail, meticulously chosen, complements the homes' ambiance, creating a haven of sophistication and refined living throughout these exquisite spaces.



Guest House Floor Plan



## Matthew Lidbetter

*Broker, Senior Vice President - Sales*

705.443.7250

[mlidbetter@sothebysrealty.ca](mailto:mlidbetter@sothebysrealty.ca)

Sotheby's International Realty Canada, Brokerage  
243 Hurontario Street  
Collingwood  
ON L9Y 2M1

*Sotheby's International Realty Canada is Independently Owned & Operated*

**Sotheby's** | Canada  
INTERNATIONAL REALTY