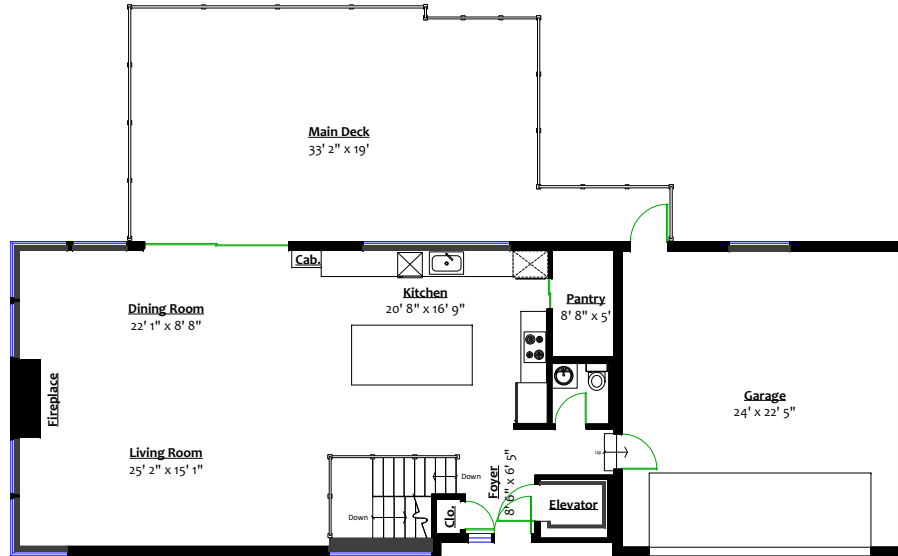
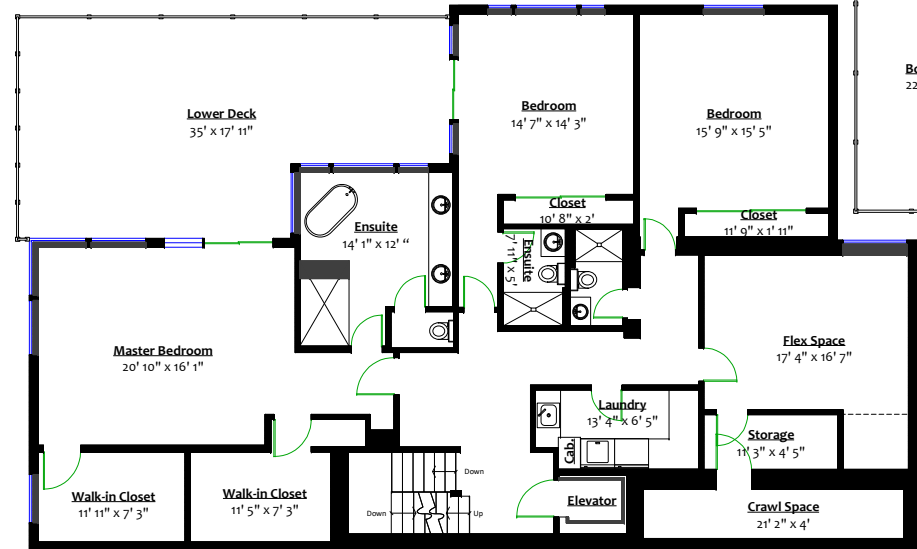


1135 Martin Street, White Rock, B.C.



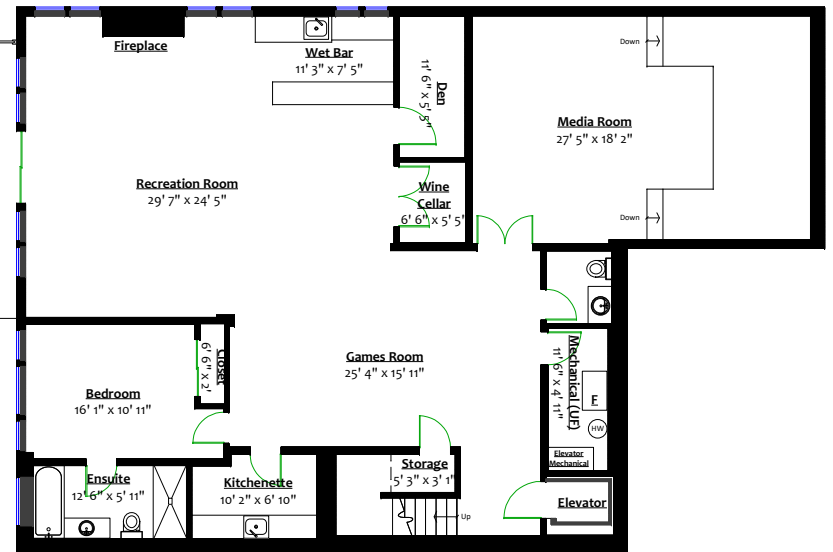
MAIN LEVEL
 Floor Area: 1,215 Sq. Ft.
 Ceiling Height: 8' 10"



LOWER LEVEL
 Finished Floor Area: 2,391 Sq. Ft.
 Unfinished Floor Area: 89 Sq. Ft.
 Ceiling Height: 9'

Totals**

Main Level:	1,215 sq. ft.	Main Deck:	670 sq. ft.
Lower Level:	2,391 sq. ft.	Garage:	590 sq. ft.
Bottom Level:	2,414 sq. ft.	Lower Deck:	550 sq. ft.
Total (fin.):	6,020 sq. ft.	Bottom Deck:	322 sq. ft.
Crawl Space:	89 sq. ft.	Total:	2,132 sq. ft.
Mechanical (UF):	57 sq. ft.		
Grand Total:	6,166 sq. ft.		



BOTTOM LEVEL
 Finished Floor Area: 2,414 Sq. Ft.
 Unfinished Floor Area: 57 Sq. Ft.
 Ceiling Height: 8'