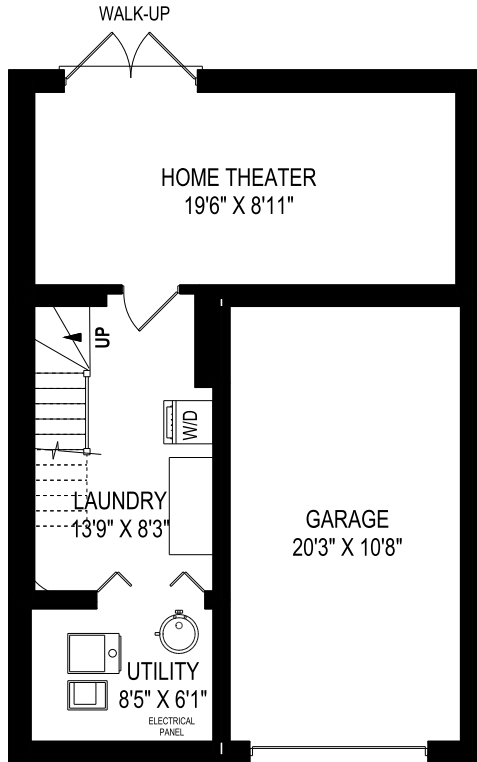
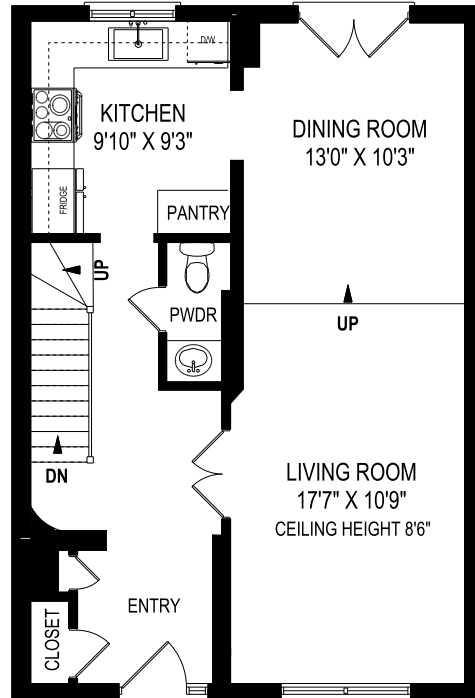


108 Belmont Street, Toronto

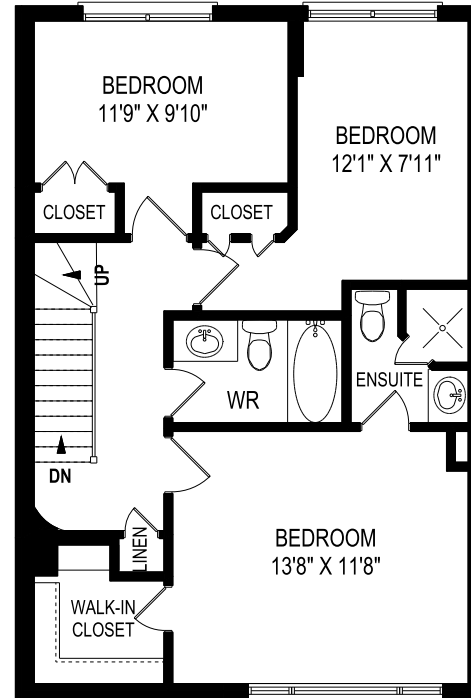
FLOOR PLAN



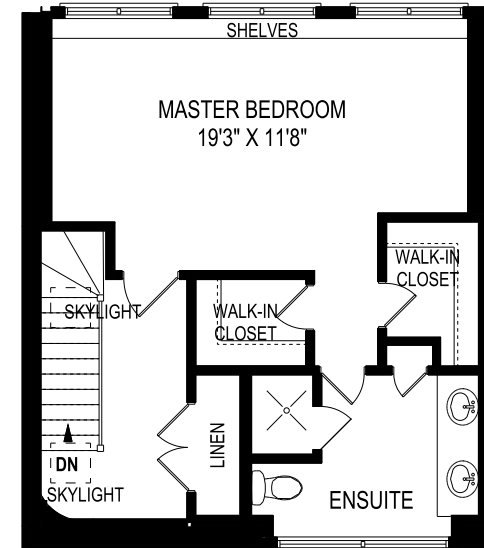
LOWER LEVEL - 456 SQUARE FEET



MAIN FLOOR - 700 SQUARE FEET



SECOND FLOOR - 700 SQUARE FEET



THIRD FLOOR - 548 SQUARE FEET



March 13, 2020

Note: Although measurements and area believed to be accurate they should be considered approximate. This drawing was prepared by Plans4U for the sole benefit and use by the client. No third party may rely on this drawing without the receipt of reliance letter from Plans4U