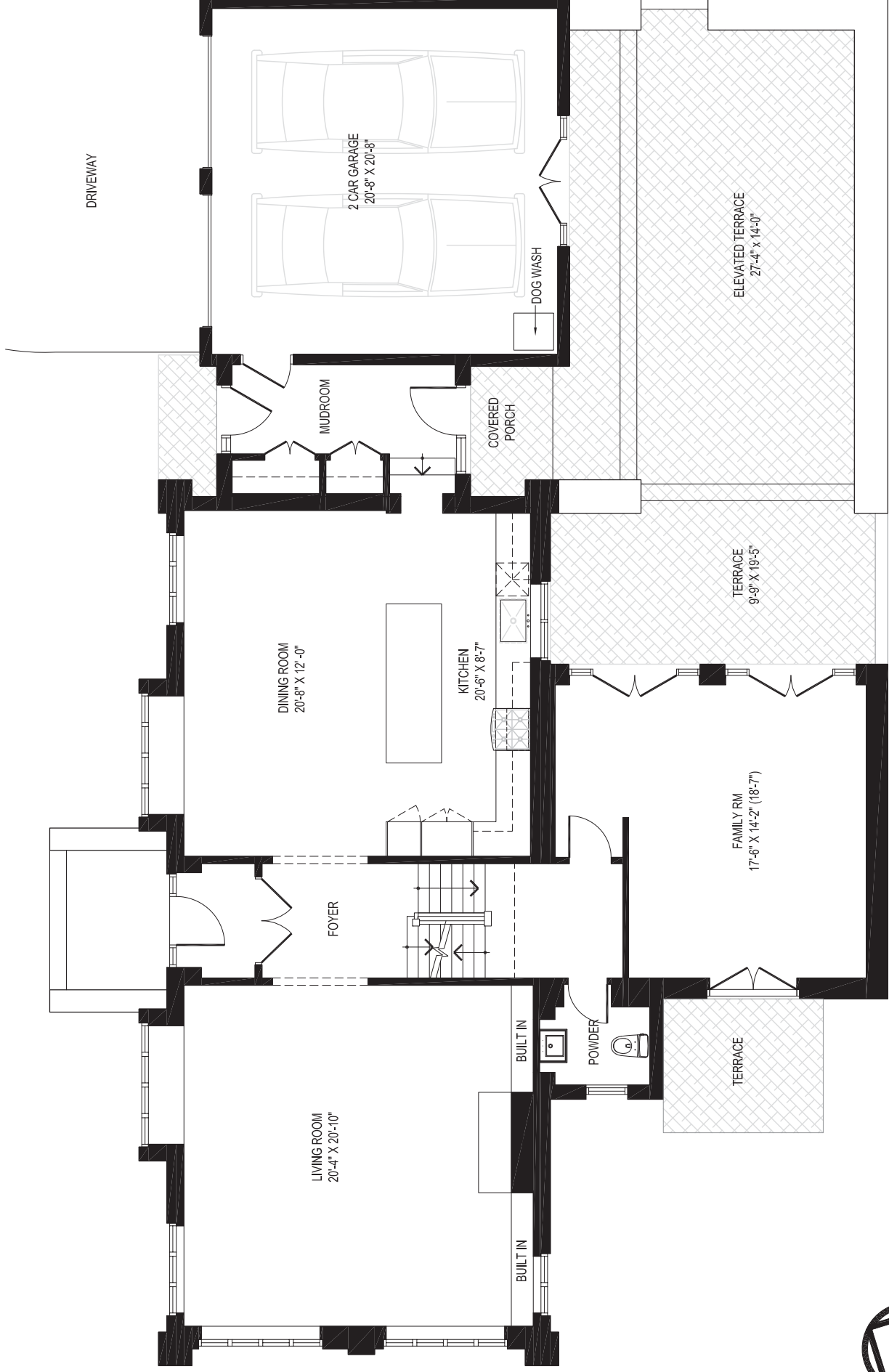


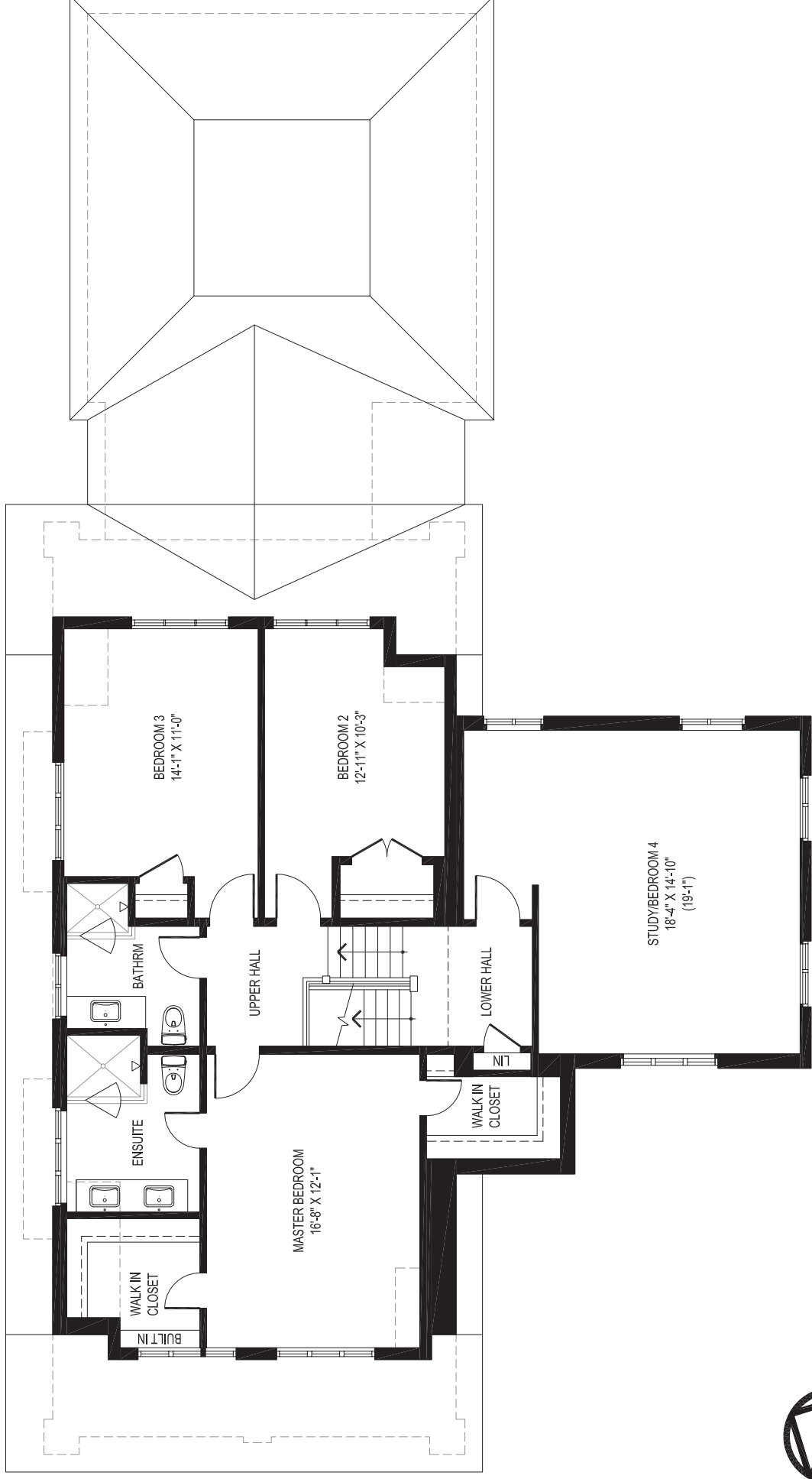
219 DOUGLAS DRIVE  
TORONTO, ONTARIO



GROUND FLOOR PLAN

Floor Area =2090 s.f.

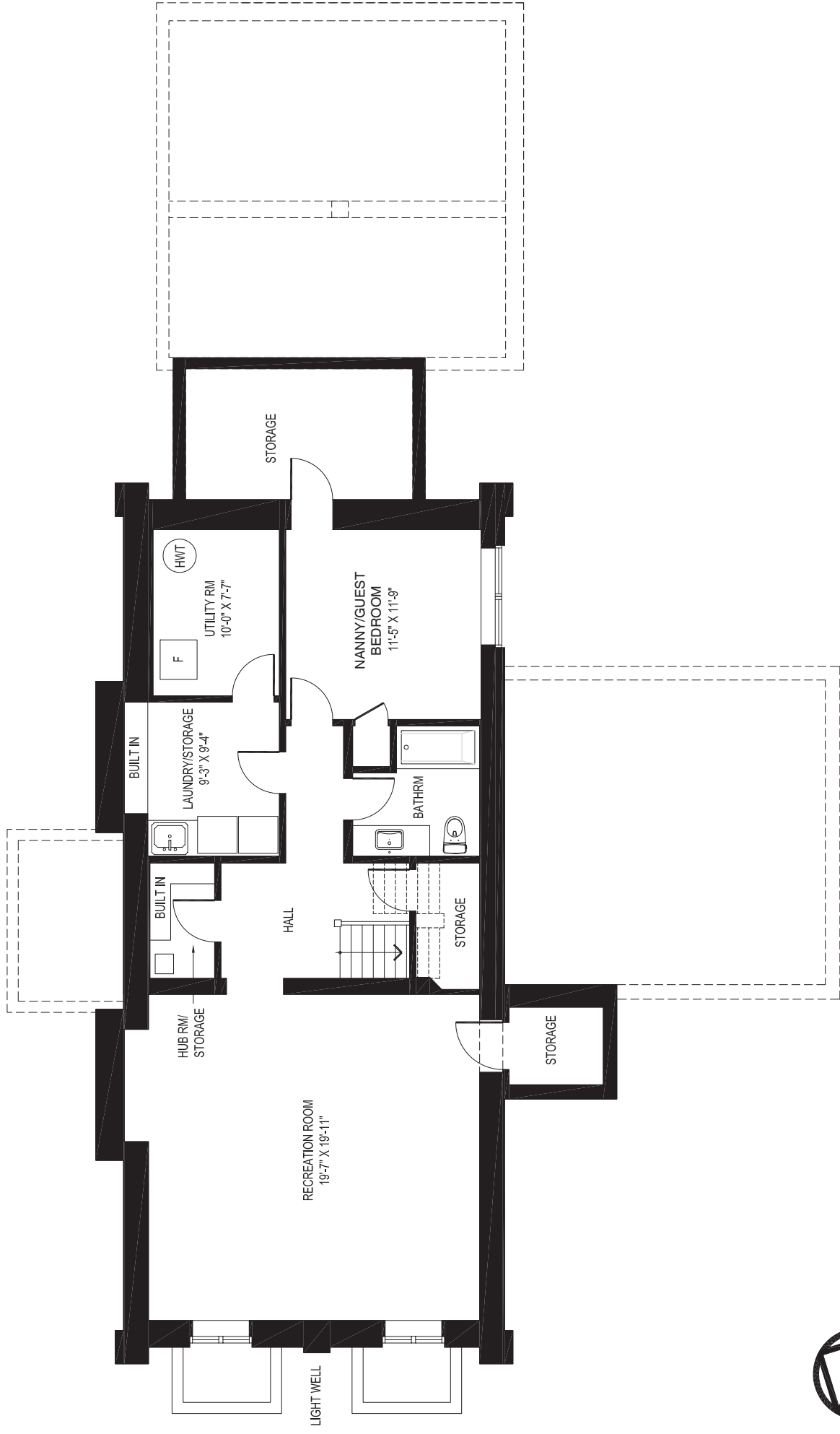
219 DOUGLAS DRIVE  
TORONTO, ONTARIO



SECOND FLOOR PLAN

Floor Area = 1398 s.f.

219 DOUGLAS DRIVE  
TORONTO, ONTARIO



BASEMENT FLOOR PLAN

Floor Area = 1255 s.f.