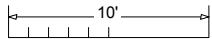
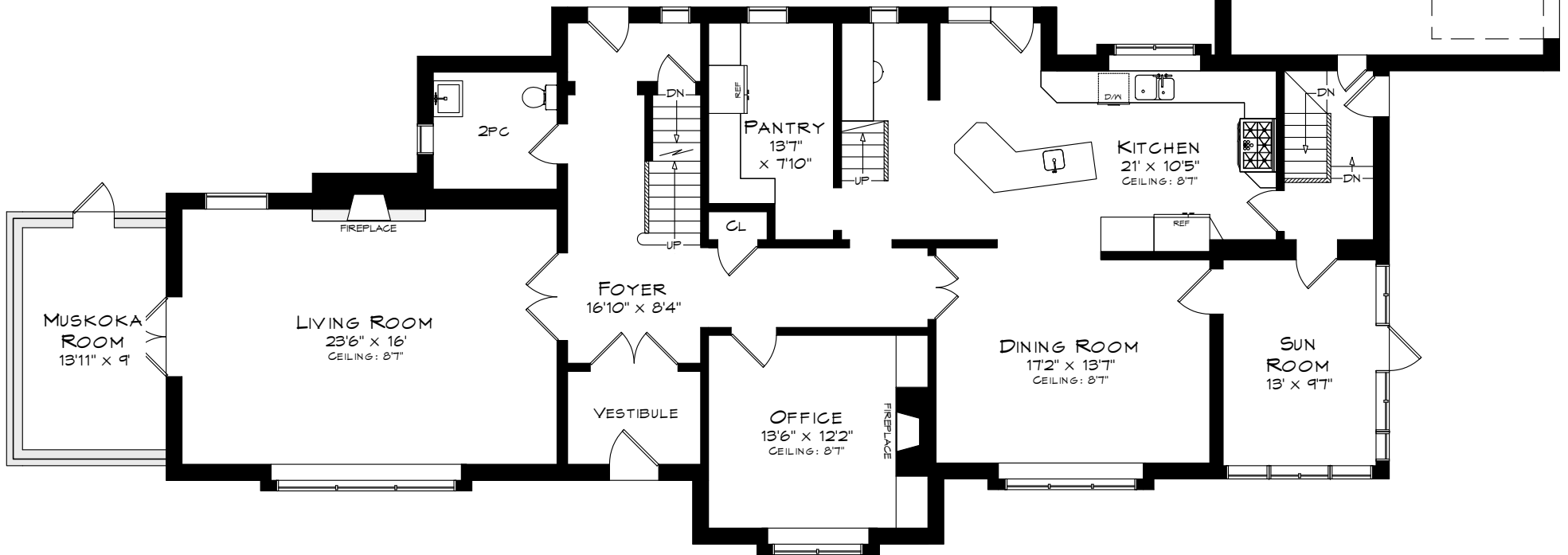


429 MACDONALD ROAD

TOTAL SQUARE FOOTAGE
7,255 SQ.FT.

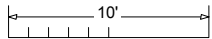
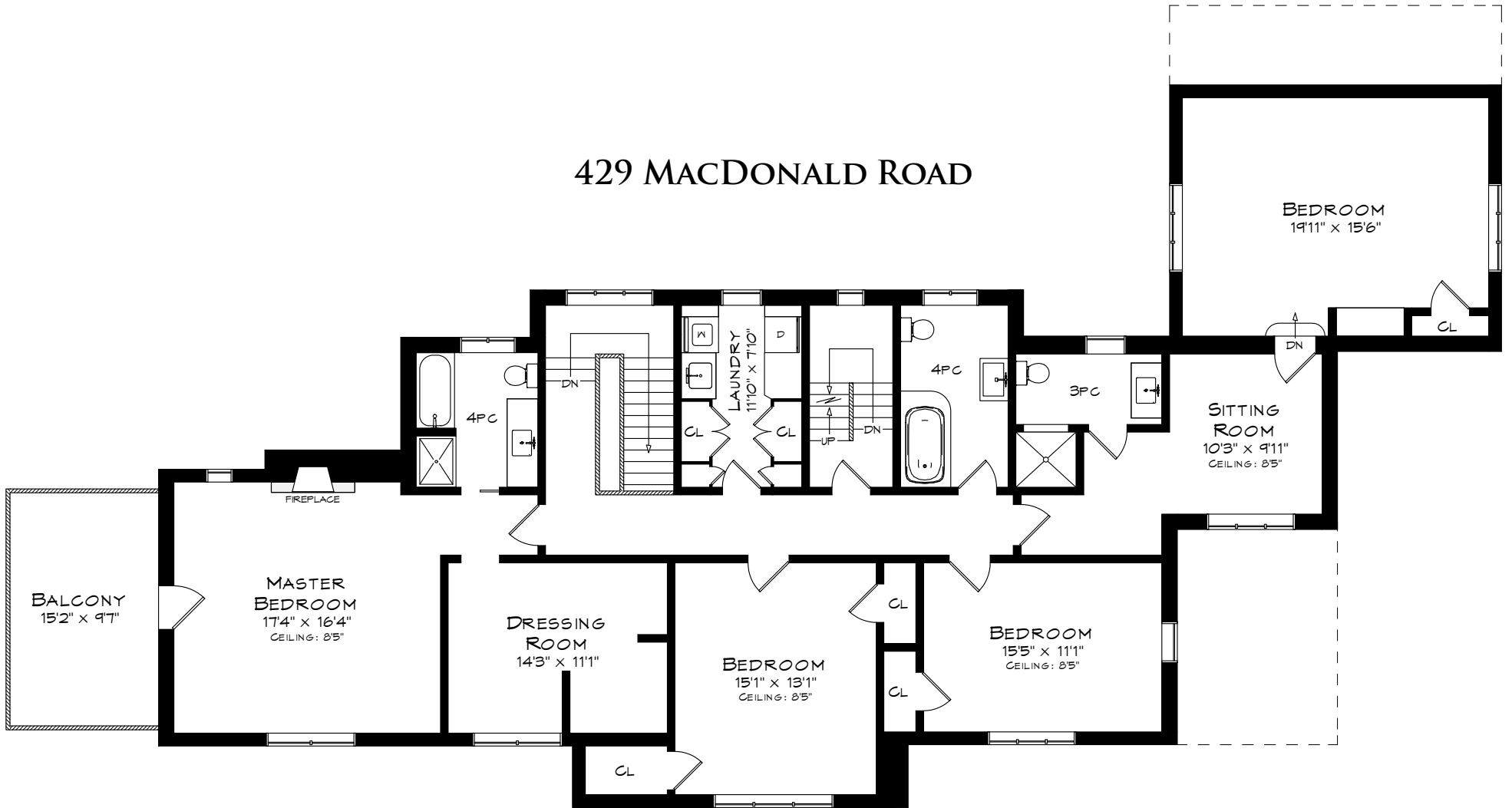
DOUBLE GARAGE
20'6" x 14'7"



Measurements may not be 100% accurate
and should be used as a guideline only.
August - 2019

MAIN LEVEL
2,066 SQUARE FEET
+ 476 SF (GARAGE)
+ 164 SF (MUSKOKA ROOM)

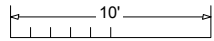
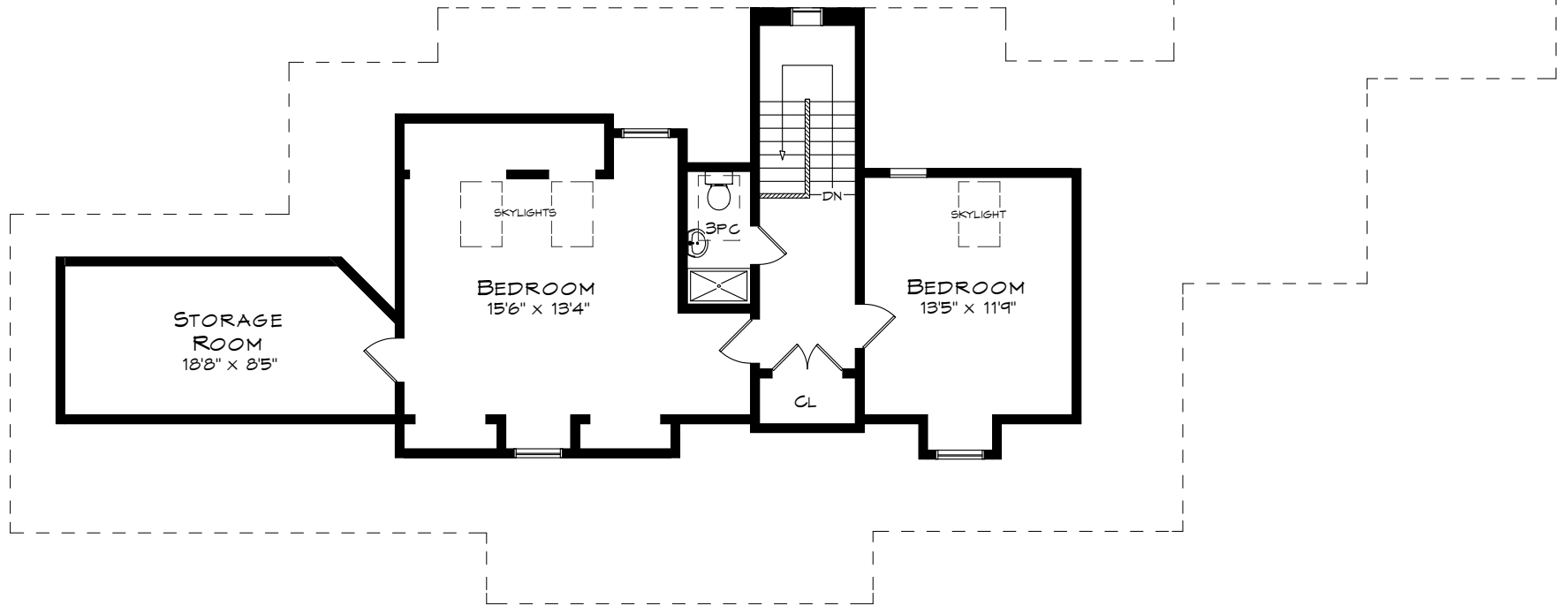
429 MACDONALD ROAD



Measurements may not be 100% accurate and should be used as a guideline only. August - 2019

SECOND LEVEL
2,291 SQUARE FEET

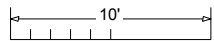
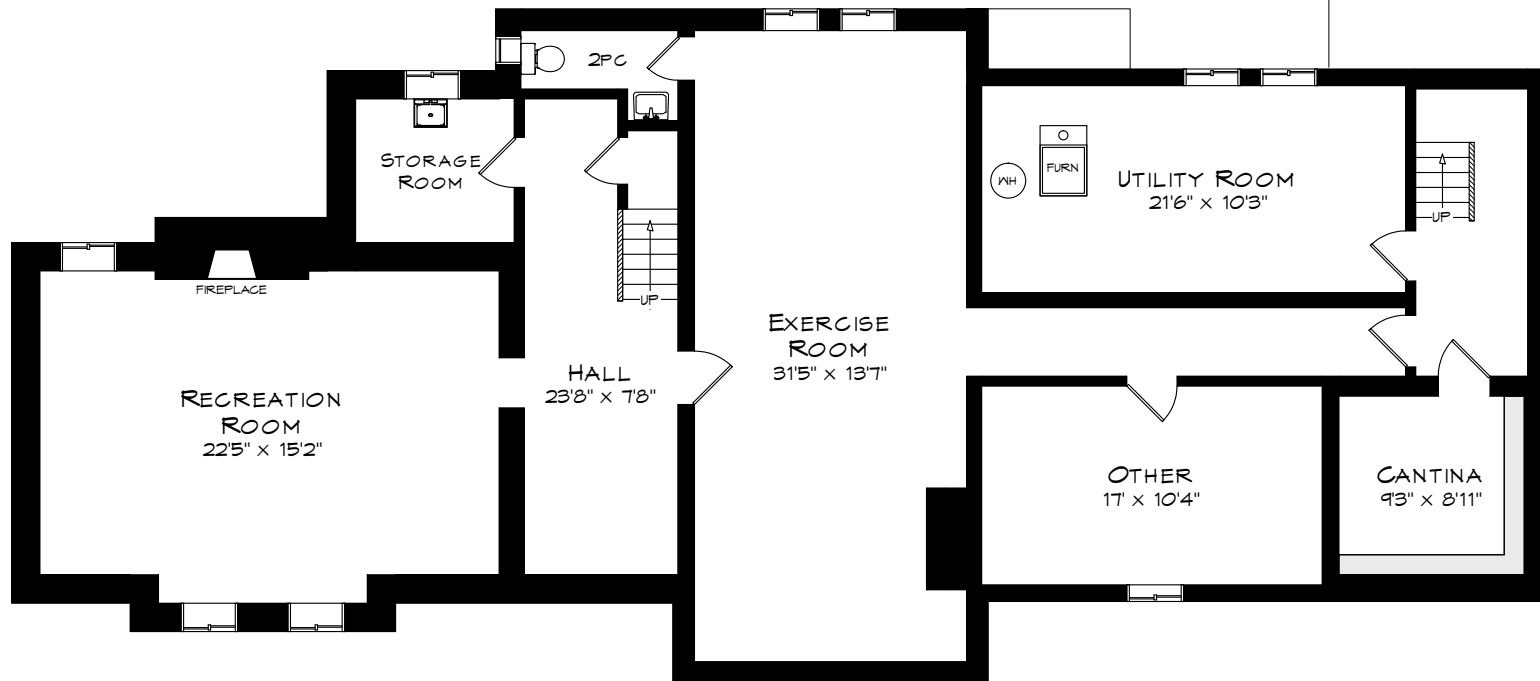
429 MACDONALD ROAD



Measurements may not be 100% accurate
and should be used as a guideline only.
August - 2019

THIRD LEVEL
858 SQUARE FEET

429 MACDONALD ROAD



Measurements may not be 100% accurate
and should be used as a guideline only.
August - 2019

LOWER LEVEL
2,040 SQUARE FEET