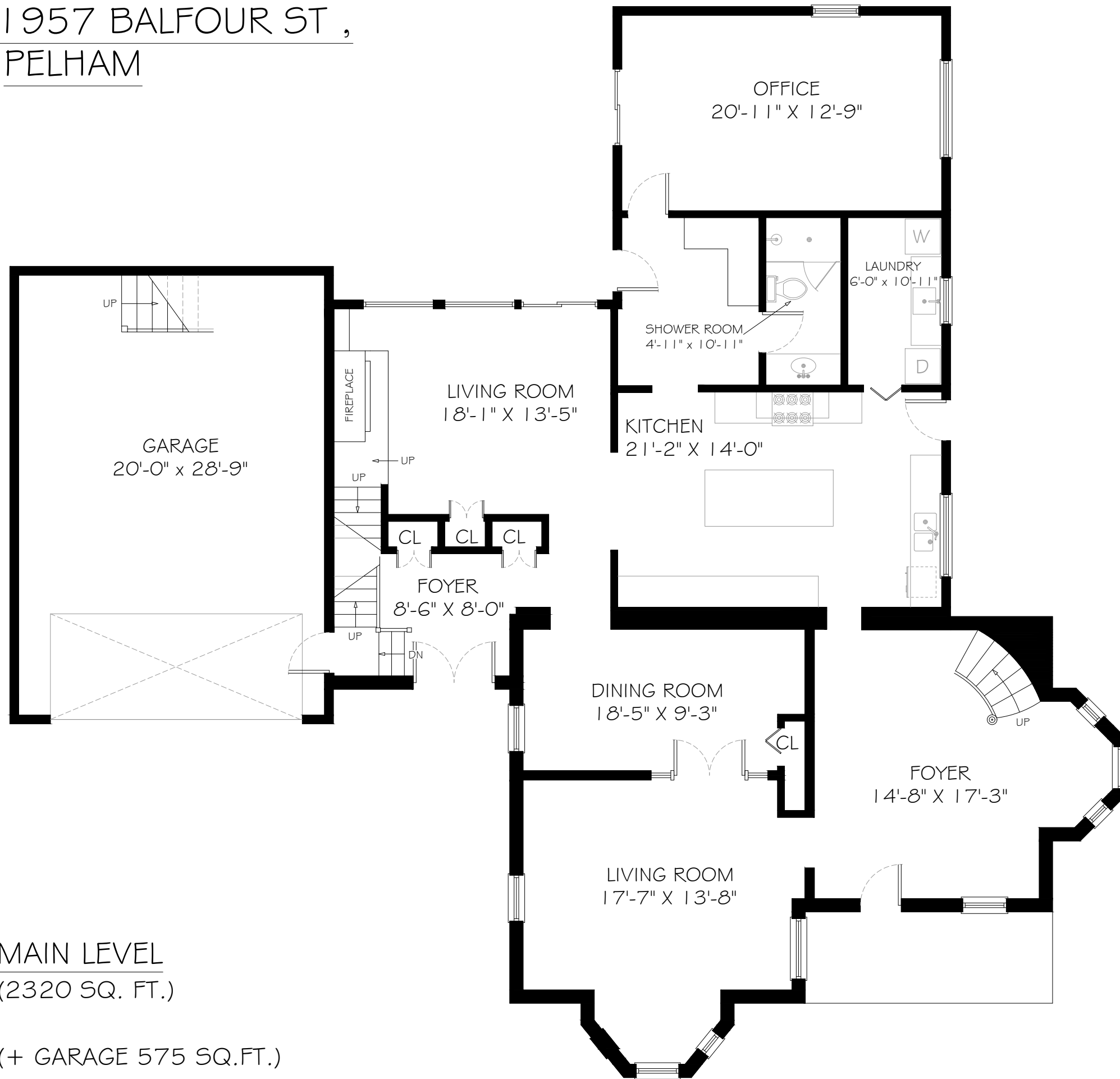
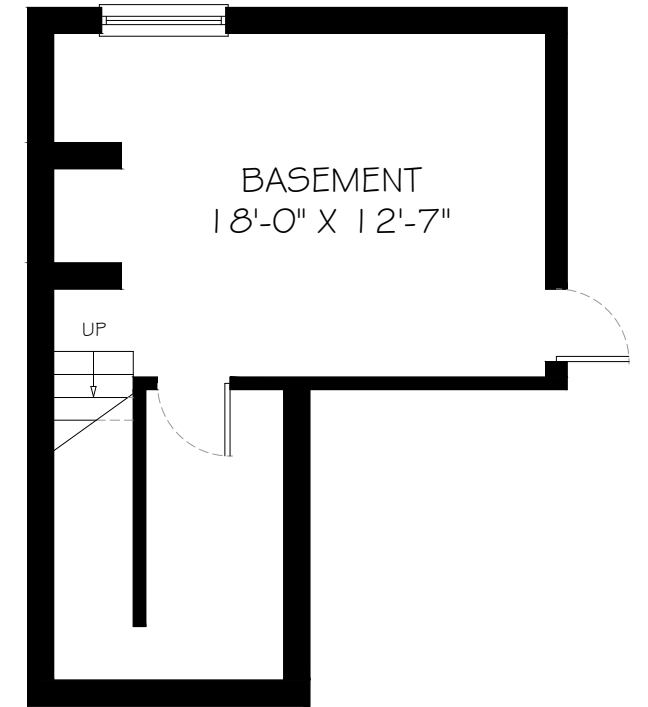


1957 BALFOUR ST ,
PELHAM

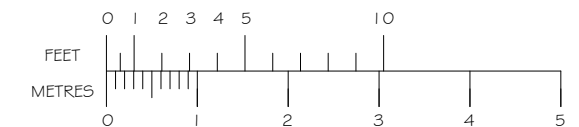


MAIN LEVEL
(2320 SQ. FT.)

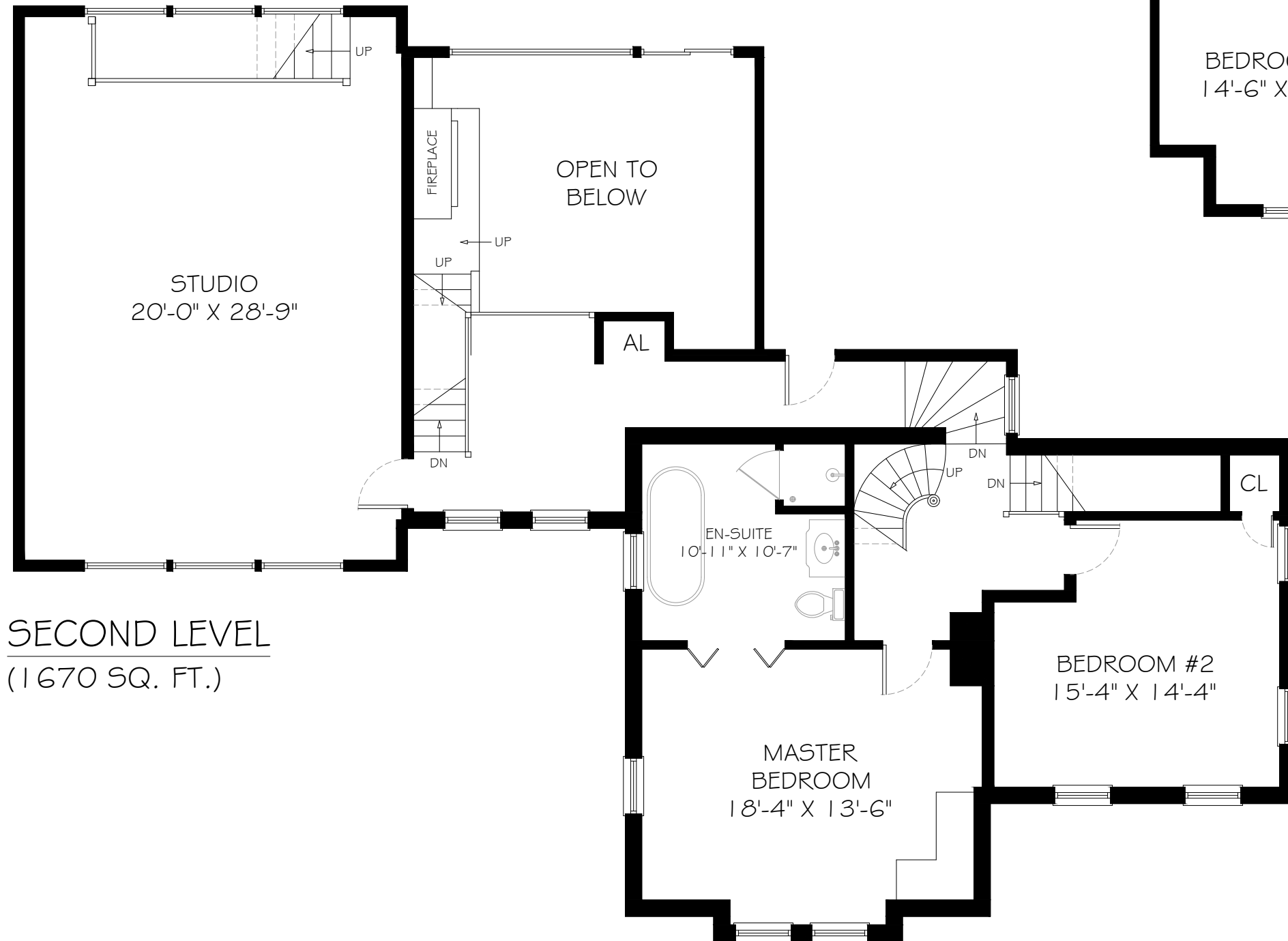
(+ GARAGE 575 SQ.FT.)



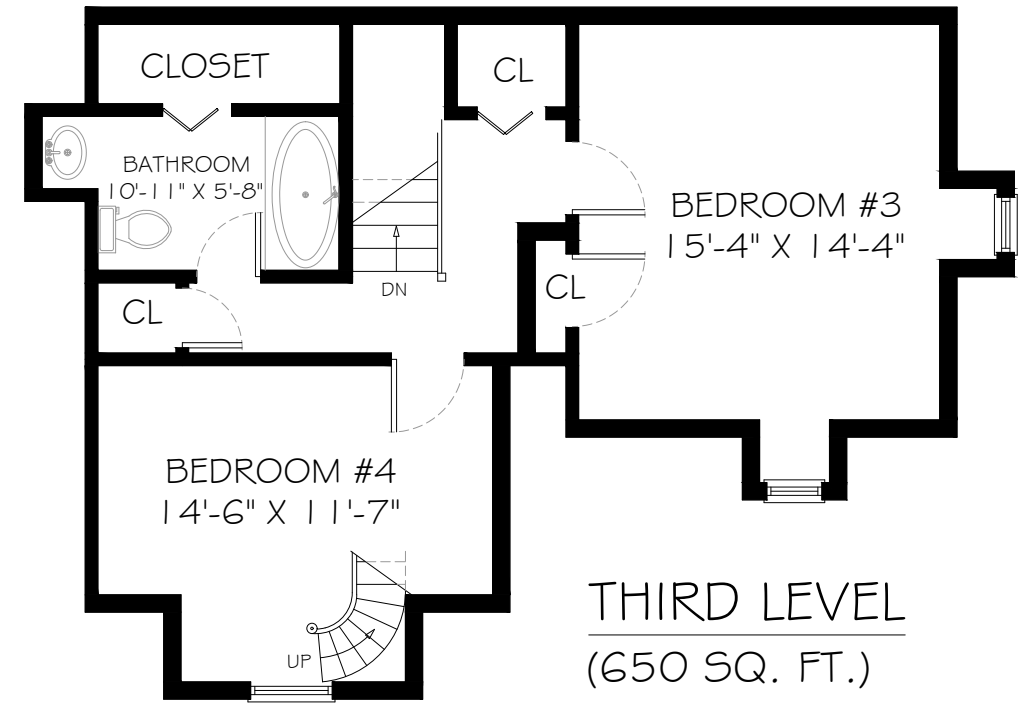
BASEMENT
(400 SQ. FT.)



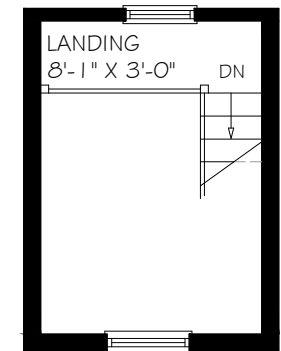
1957 BALFOUR ST ,
 PELHAM



SECOND LEVEL
 (1670 SQ. FT.)



THIRD LEVEL
 (650 SQ. FT.)



ATTIC
 (25 SQ. FT.)

