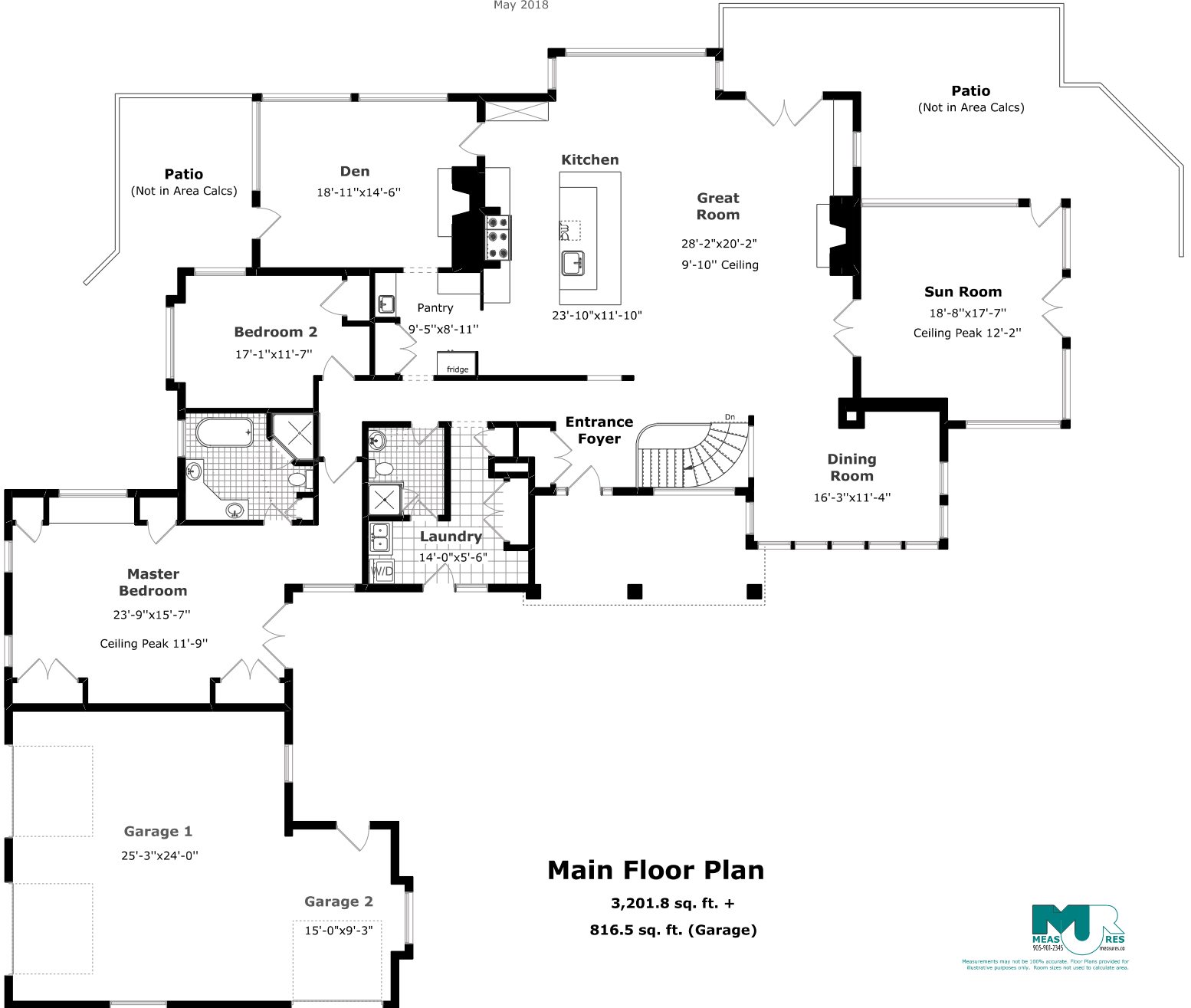


# Main House

## 753432 2nd Line EHS, Mono



May 2018



### Main Floor Plan

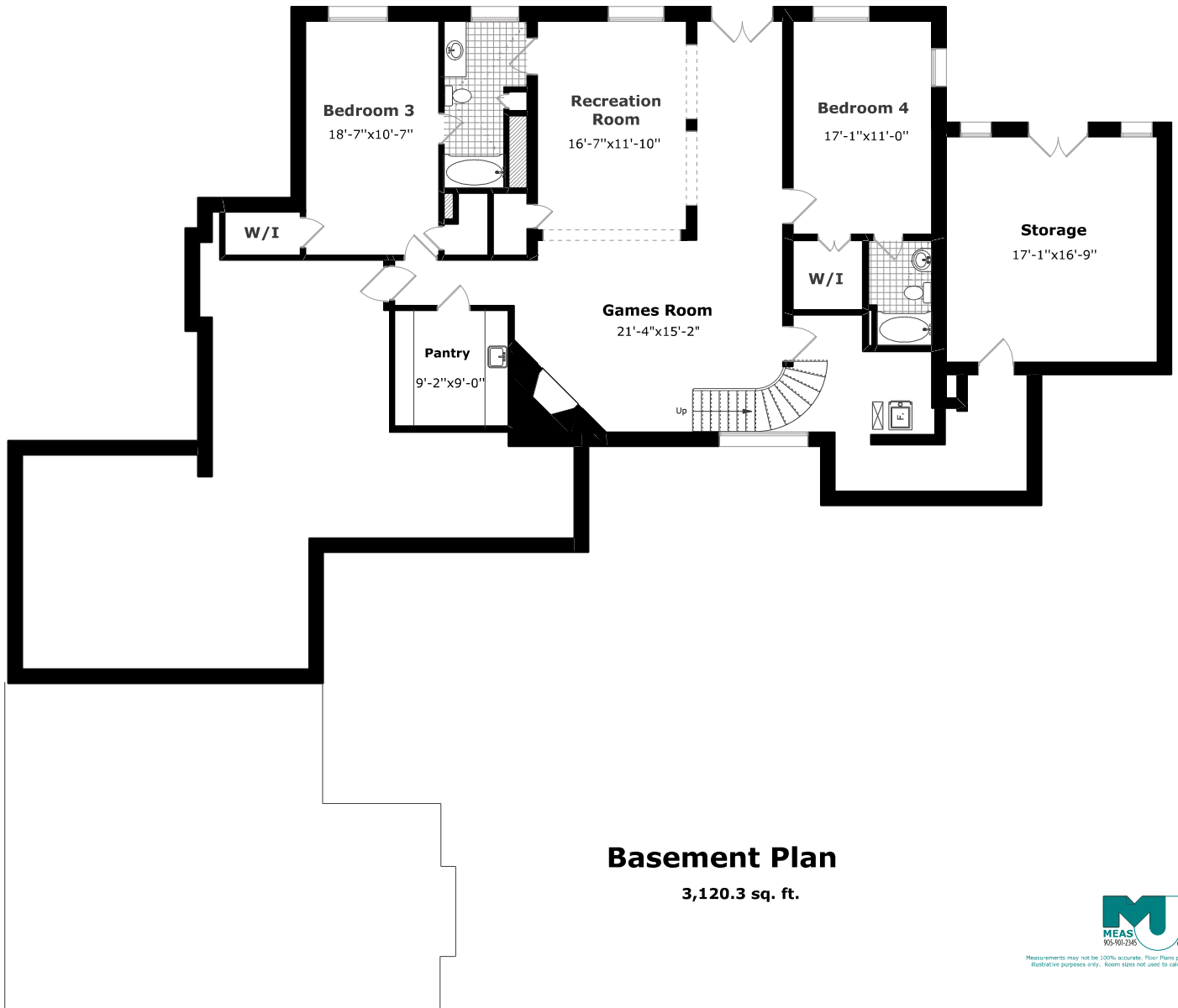
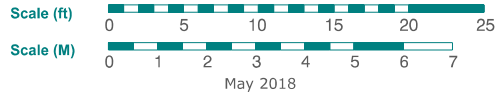
3,201.8 sq. ft. +  
816.5 sq. ft. (Garage)



Measurements may not be 100% accurate. Floor Plans provided for illustrative purposes only. Room sizes not used to calculate area.

# Main House

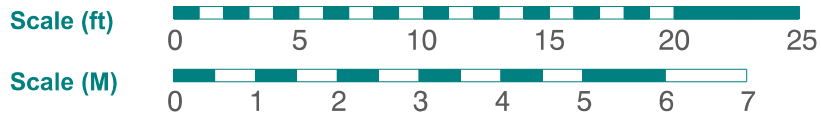
## 753432 2nd Line EHS, Mono



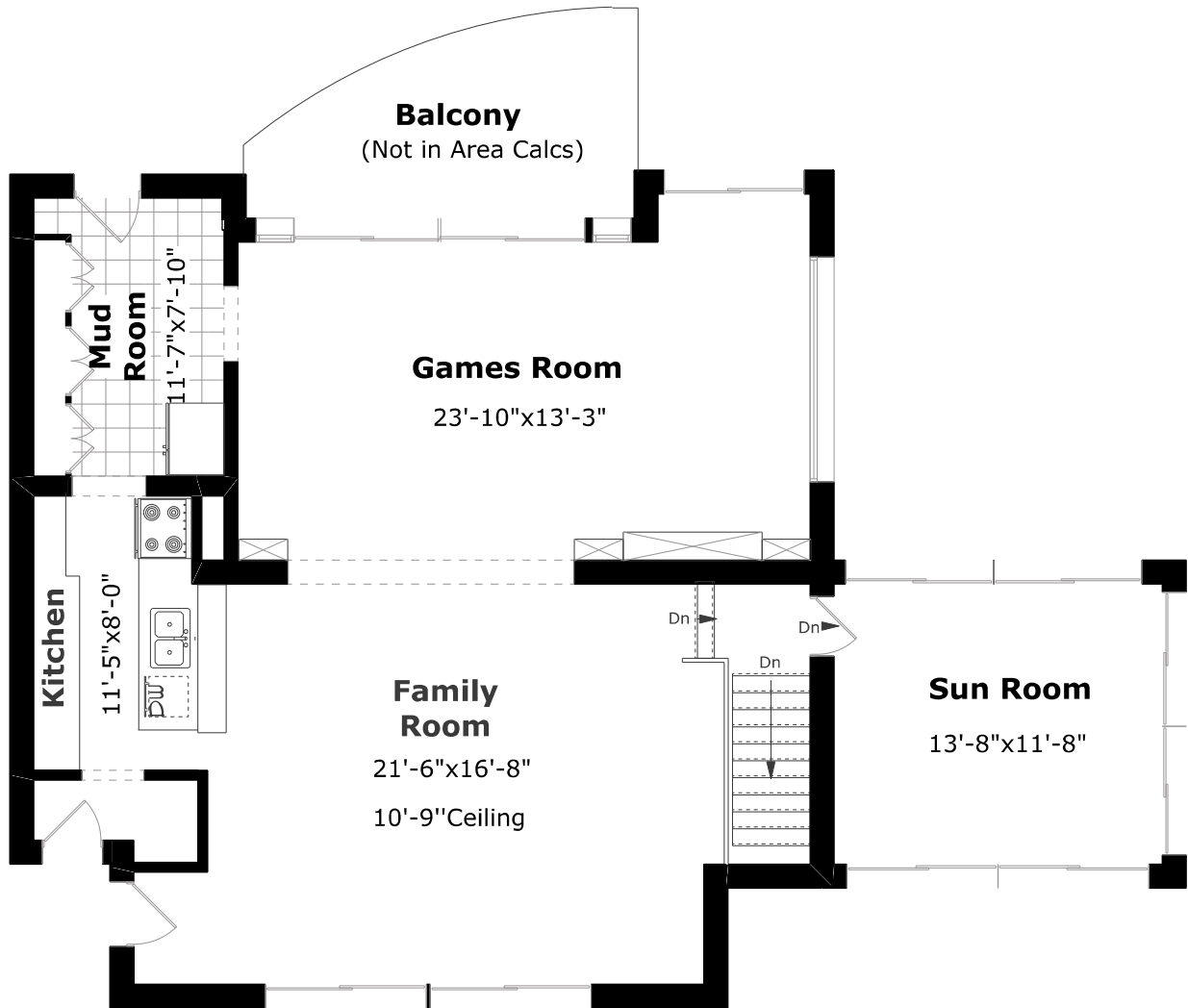
Measurements may not be 100% accurate. Floor Plans provided for illustrative purposes only. Room sizes not used to calculate area.

# Pool House

## 753432 2nd Line EHS, Mono



May 2018



### Main Floor Plan

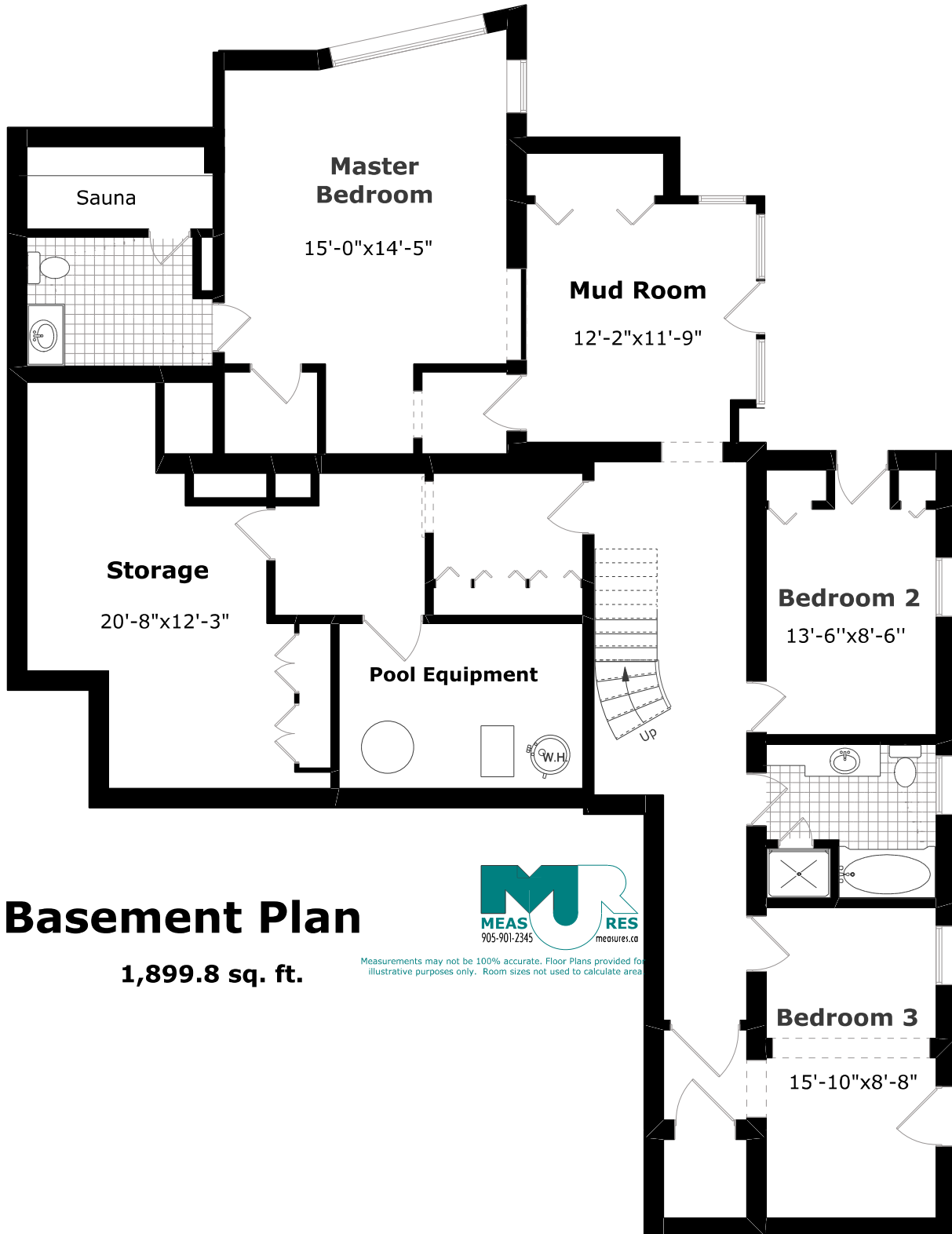
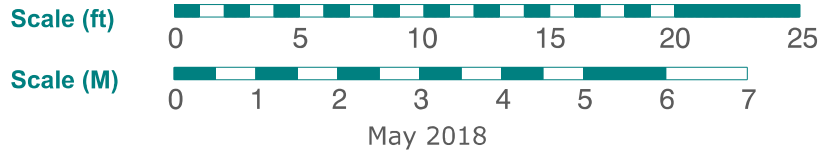
1,329.1 sq. ft.



Measurements may not be 100% accurate. Floor Plans provided for illustrative purposes only. Room sizes not used to calculate area.

# Pool House

## 753432 2nd Line EHS, Mono



### Basement Plan

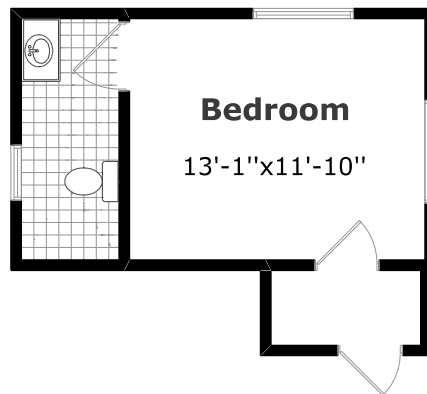
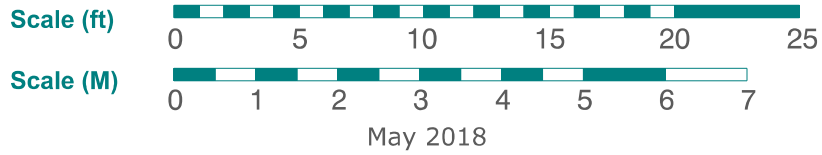
1,899.8 sq. ft.



Measurements may not be 100% accurate. Floor Plans provided for illustrative purposes only. Room sizes not used to calculate area

# Bunkie

## 753432 2nd EHS, Mono Line Bunkie



## Bunkie Plan

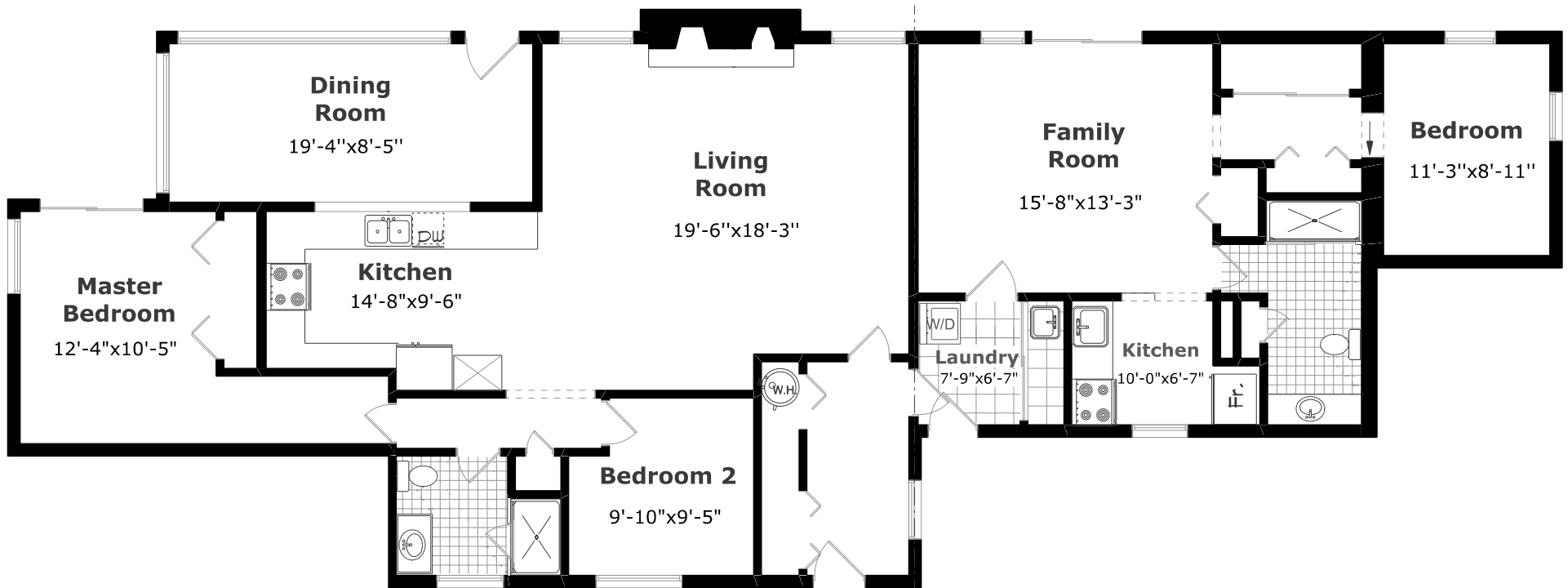
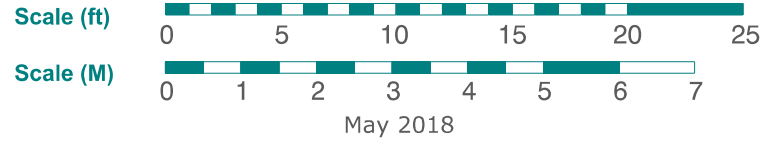
202.4 sq. ft.



Measurements may not be 100% accurate. Floor Plans provided for illustrative purposes only. Room sizes not used to calculate area.

# Gate House

## 753432 2nd Line EHS, Mono



Cottage 3 ← → Cottage 4

### Main Floor Plan

1,212.6 sq. ft. (Cottage 3)

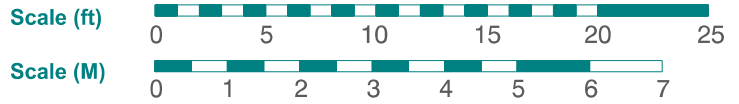
655.9 sq. ft. (Cottage 4)



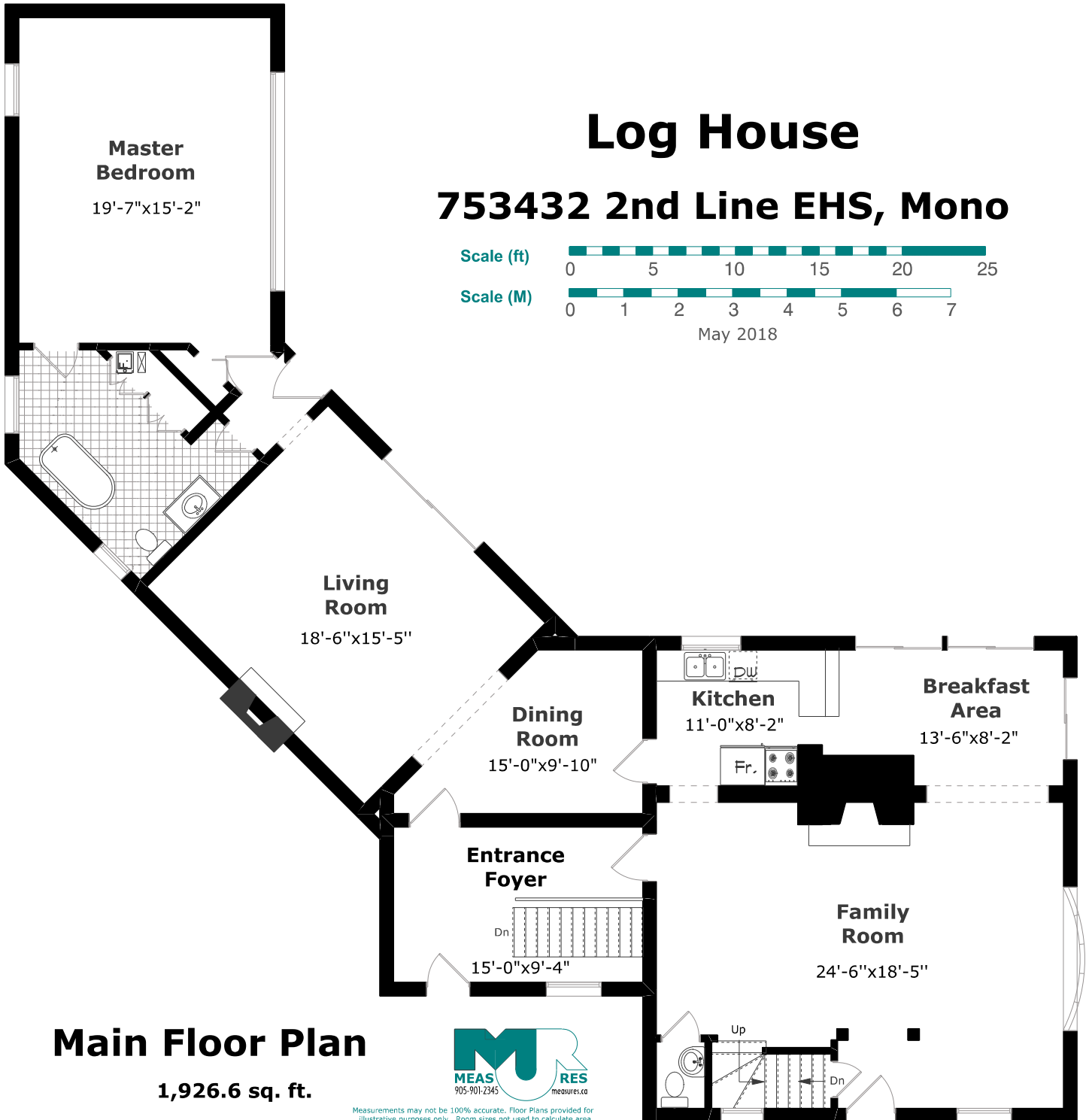
Measurements may not be 100% accurate. Floor Plans provided for illustrative purposes only. Room sizes not used to calculate area.

# Log House

## 753432 2nd Line EHS, Mono



May 2018

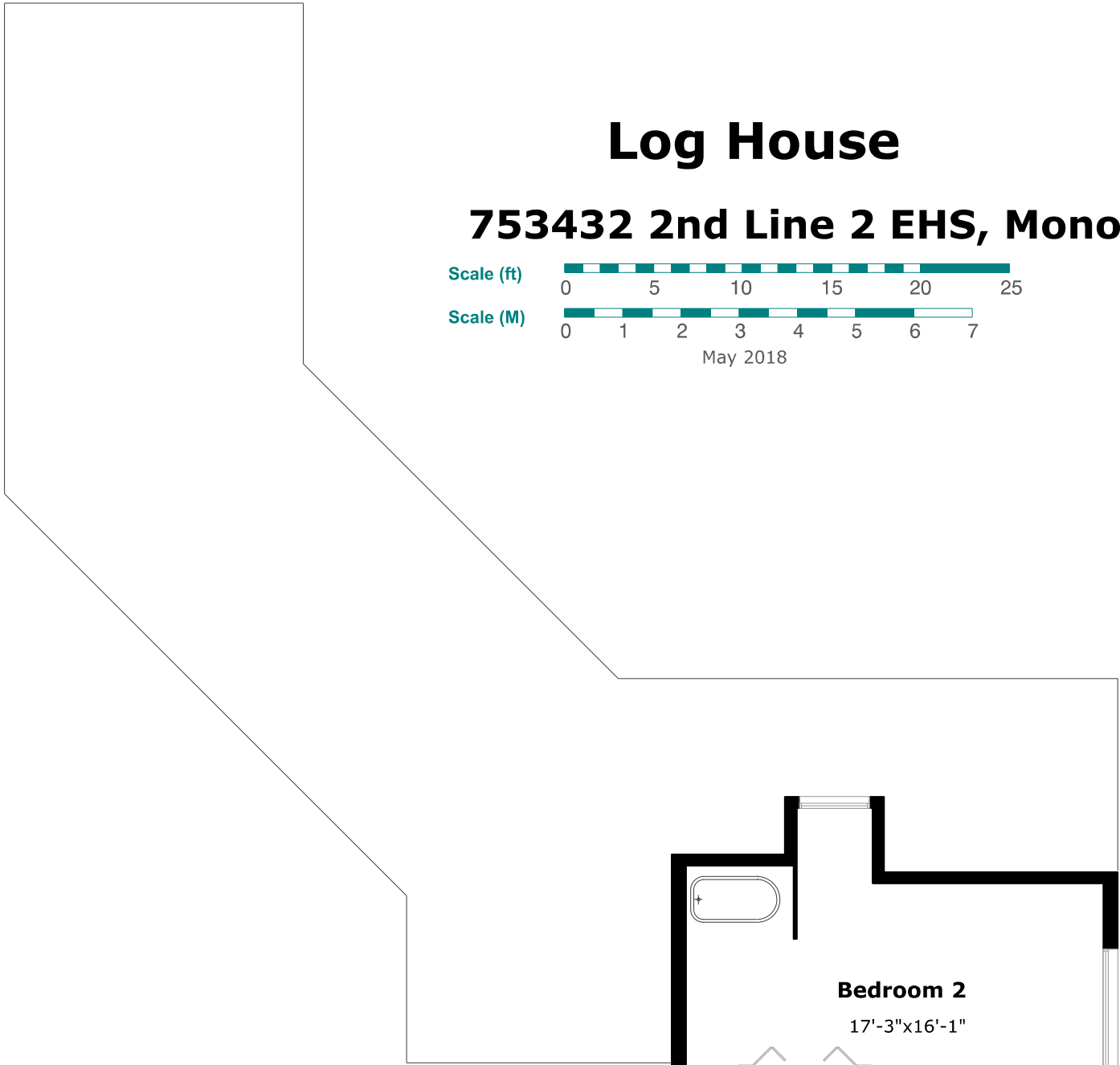


### Main Floor Plan

1,926.6 sq. ft.

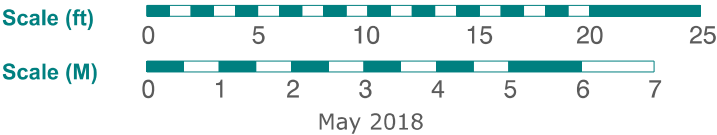


Measurements may not be 100% accurate. Floor Plans provided for illustrative purposes only. Room sizes not used to calculate area.



# Log House

## 753432 2nd Line 2 EHS, Mono



### Loft Plan

493.8 sq. ft.



Measurements may not be 100% accurate. Floor Plans provided for illustrative purposes only. Room sizes not used to calculate area.

