

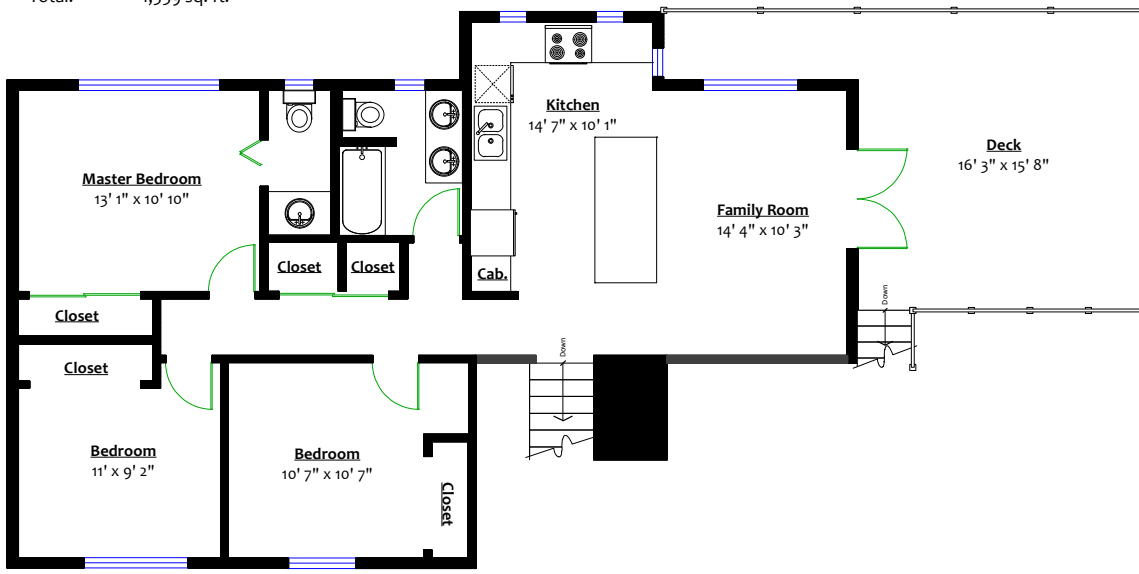
**2303 Cove Place,  
Surrey, B.C.**

**Totals\*\***

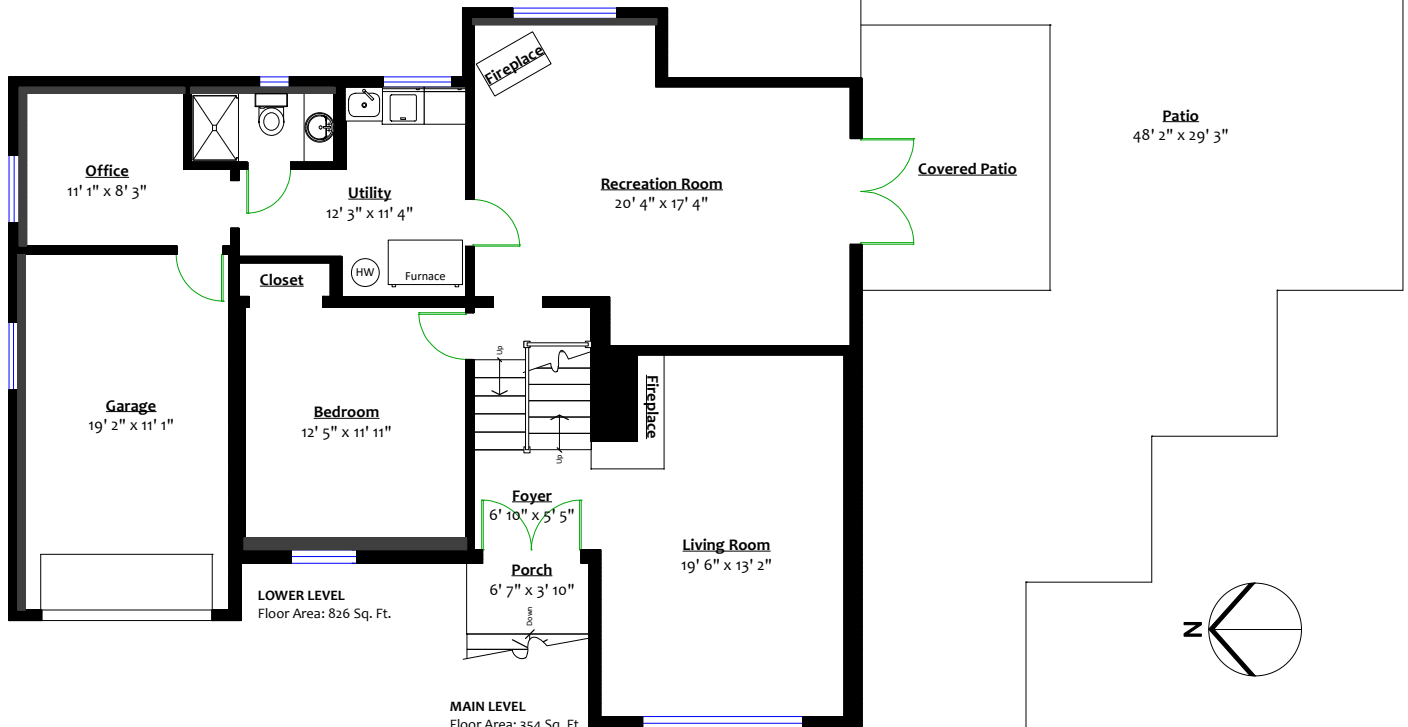
Main Level: 354 sq. ft.  
 Upper Level: 1,059 sq. ft.  
 Lower Level: 826 sq. ft.  
 Total: 2,239 sq. ft.

**Other Areas\*\***

Porch: 25 sq. ft.  
 Garage: 236 sq. ft.  
 Patio: 1,005 sq. ft.  
 Deck: 293 sq. ft.  
 Total: 1,559 sq. ft.



**UPPER LEVEL**  
 Floor Area: 1,059 Sq. Ft.



**LOWER LEVEL**  
 Floor Area: 826 Sq. Ft.

**MAIN LEVEL**  
 Floor Area: 354 Sq. Ft.

