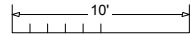
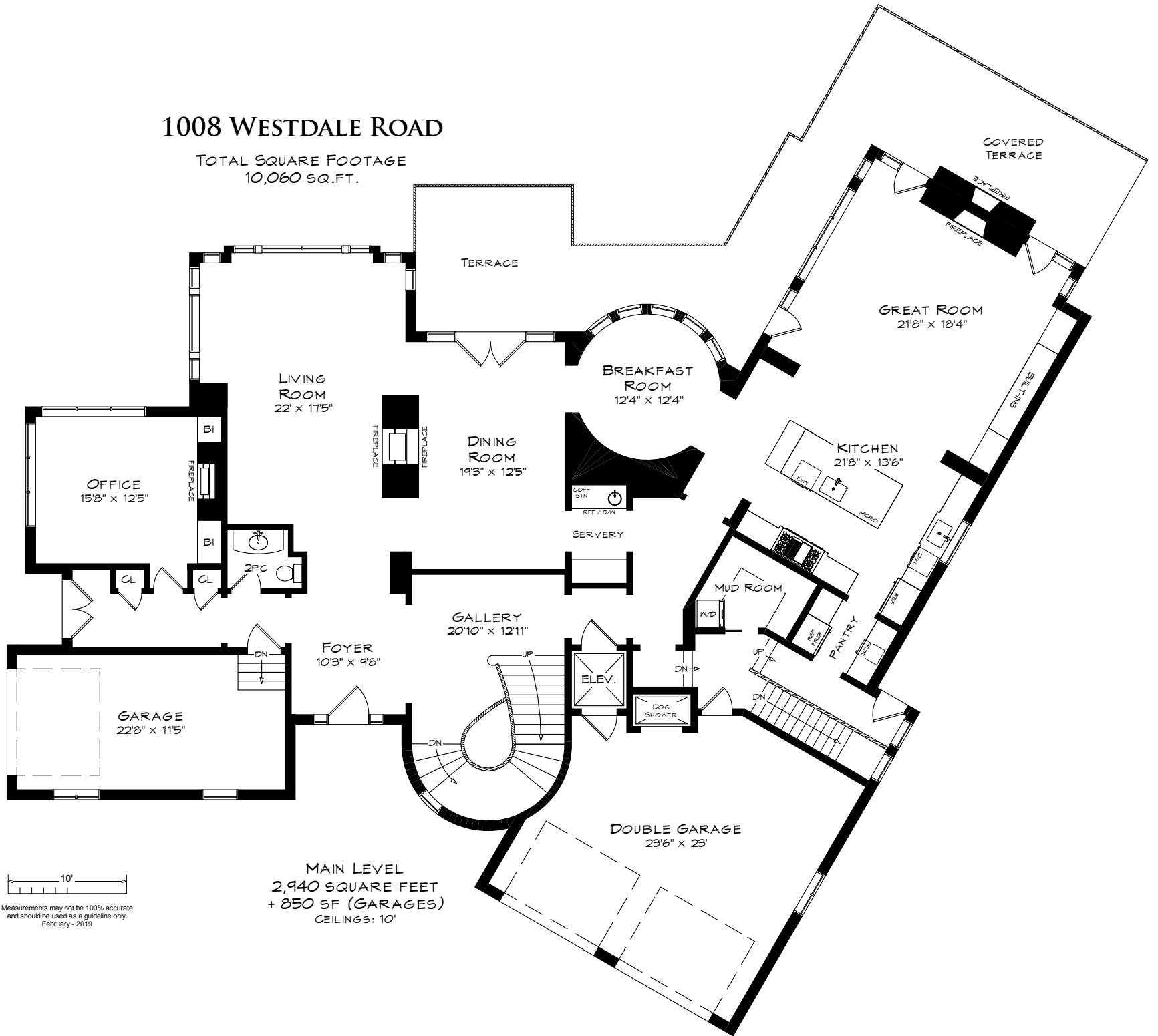


1008 WESTDALE ROAD

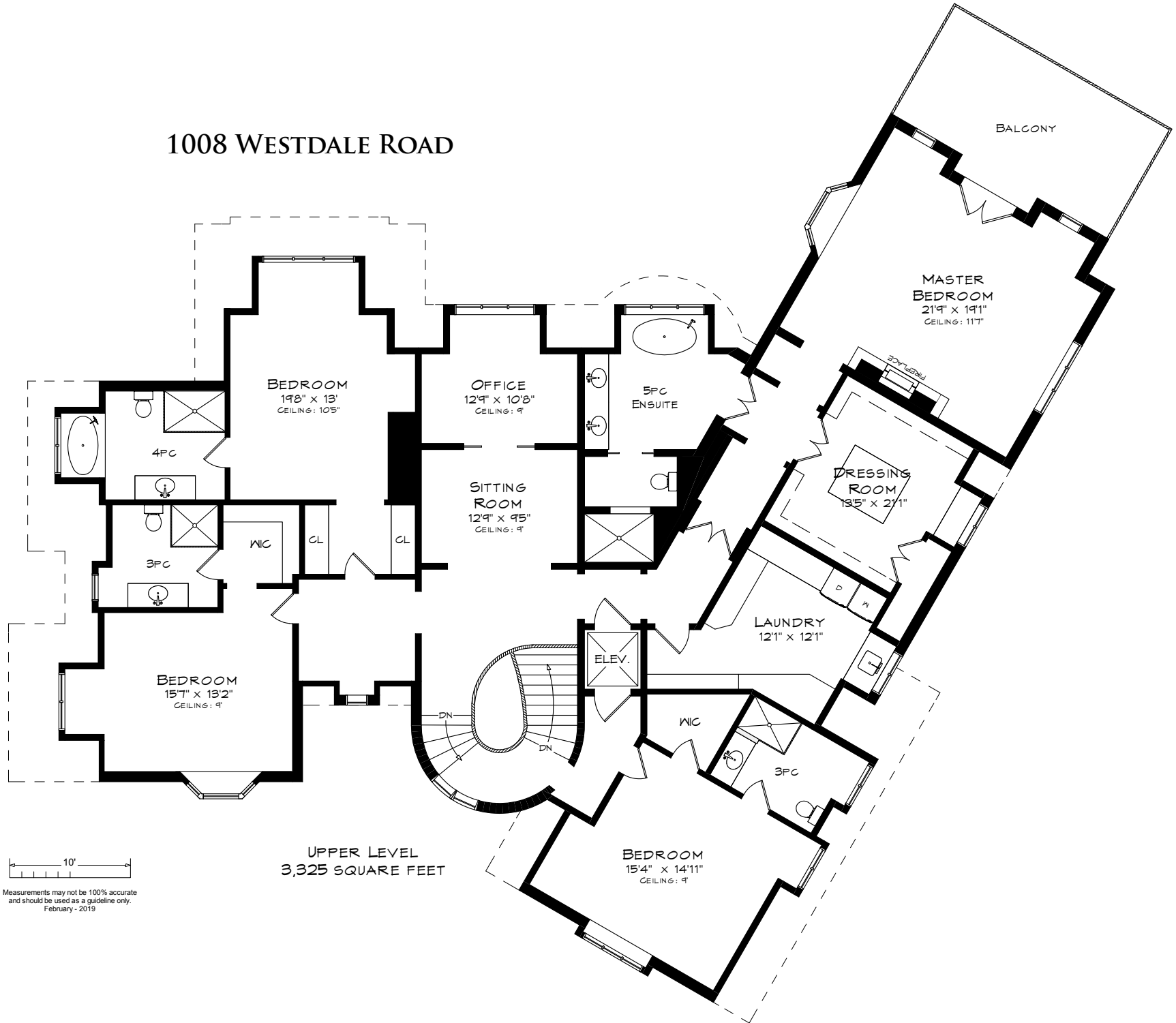
TOTAL SQUARE FOOTAGE
10,060 SQ.FT.



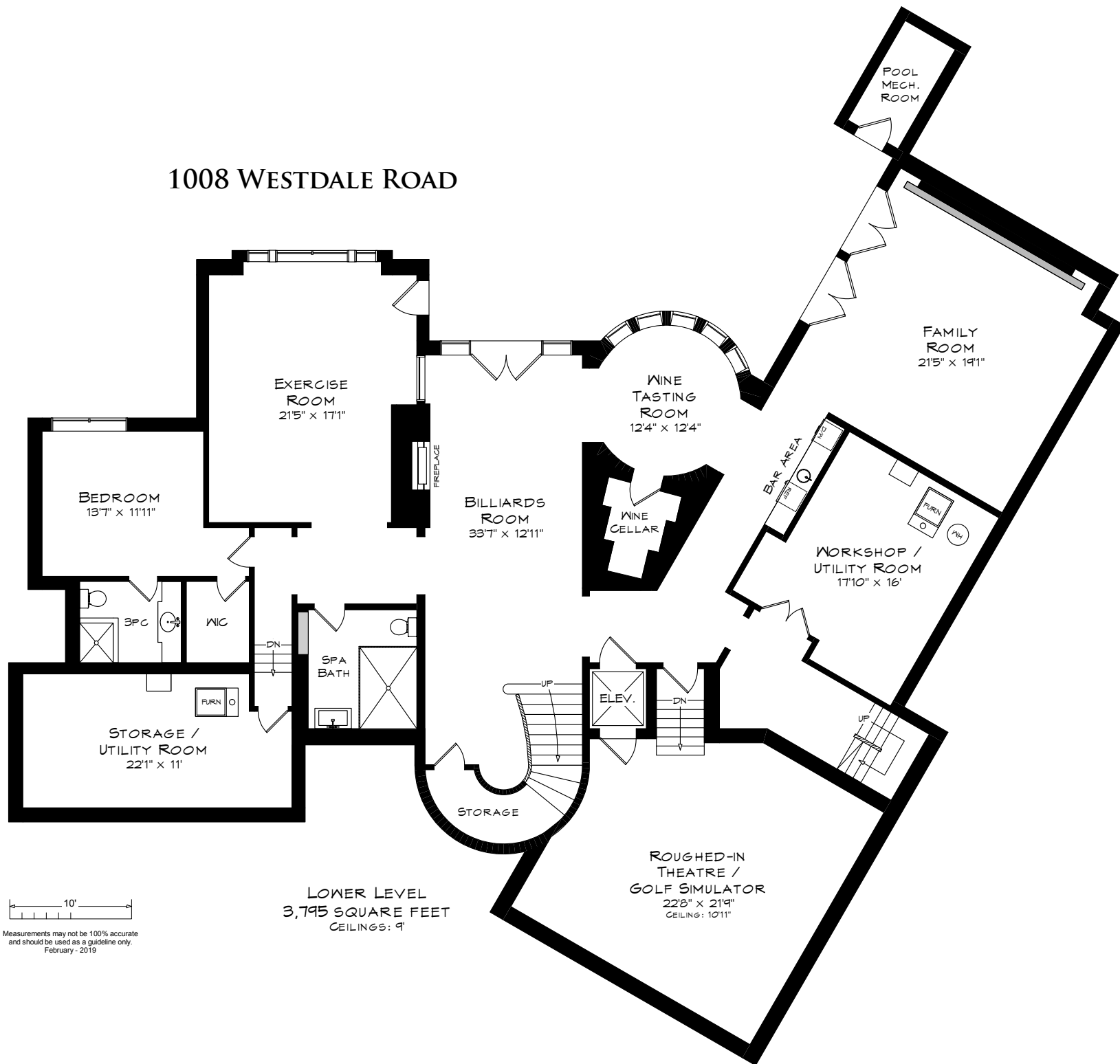
Measurements may not be 100% accurate
and should be used as a guideline only.
February - 2019

MAIN LEVEL
2,940 SQUARE FEET
+ 850 SF (GARAGES)
CEILINGS: 10'

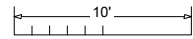
1008 WESTDALE ROAD



1008 WESTDALE ROAD



LOWER LEVEL
3,795 SQUARE FEET
CEILINGS: 9'



Measurements may not be 100% accurate
and should be used as a guideline only.
February - 2019