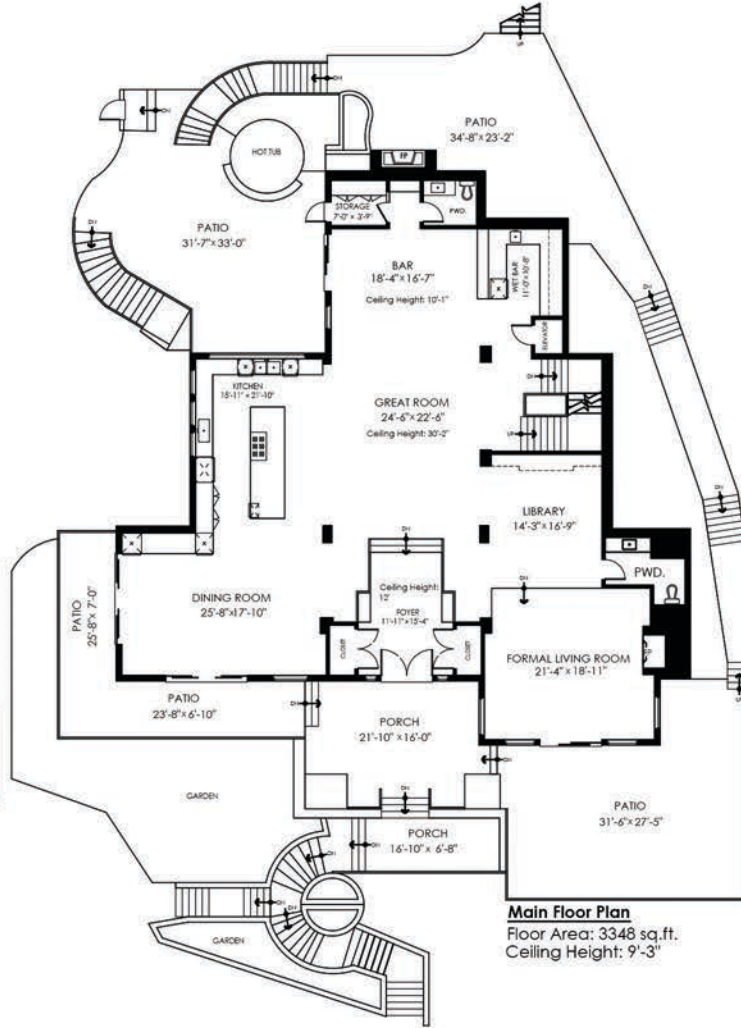


2756 Willoughby Rd West Vancouver



Main Floor: 3,348 sq.ft.
Upper Floor: 3,105 sq.ft.
Lower Floor: 2,686 sq.ft.
Total Livable: 9,139 sq.ft.

Garage: 878 sq.ft.
Grand Total: 10,017 sq.ft.

Patios: 2,231 sq.ft.
Balconies: 575 sq.ft.
Porch: 416 sq.ft.
Total Extras: 3,222 sq.ft.

Open To Below: 100 sq.ft.

MEASURED ON: (2024-04-01)

E&O Insured. Total square foot calculated to gross unit area. SQFT based on interior measurements to exterior walls, not taken from original blueprints, may include unfinished area. This is for marketing purposes only and is not intended for architectural/construction use. All details, sizes & placements should be considered approximate within +/- 2% tolerance.