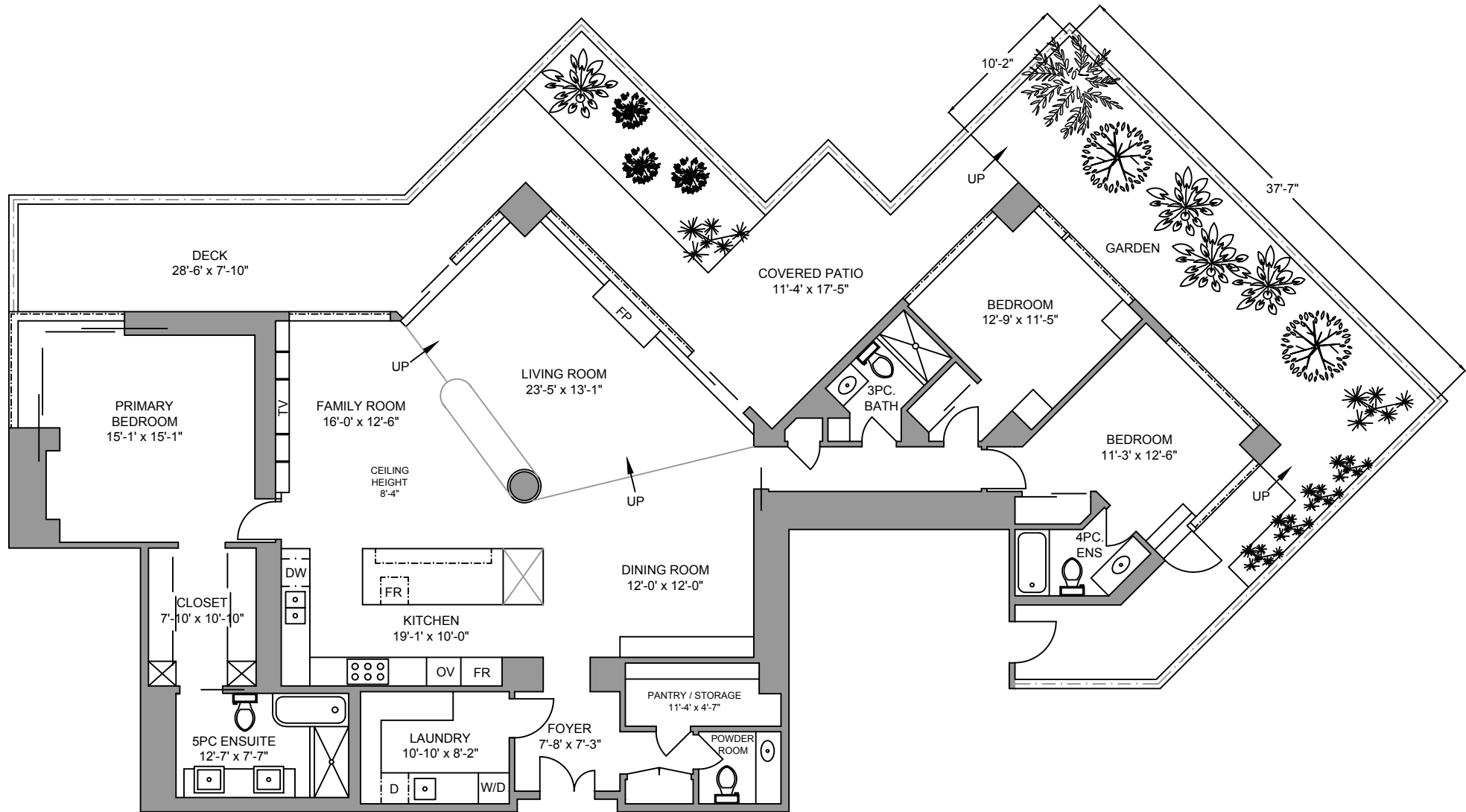


902 - 1600 HORNBY STREET
2537 SQ. FT.
8'-4" CEILING HEIGHT



902 - 1600 HORNBY STREET JANUARY 23, 2024			
PREPARED FOR THE EXCLUSIVE USE OF MCKITKA HARDY PORTEOUS GROUP. PLANS MAY NOT BE 100% ACCURATE, IF CRITICAL BUYER TO VERIFY.			
FLOOR	TOTAL	AREA (SQ. FT.)	
		FINISHED	DECK / PATIO
MAIN	2537	2537	1345
TOTAL	2537	2537	1345