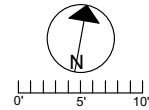
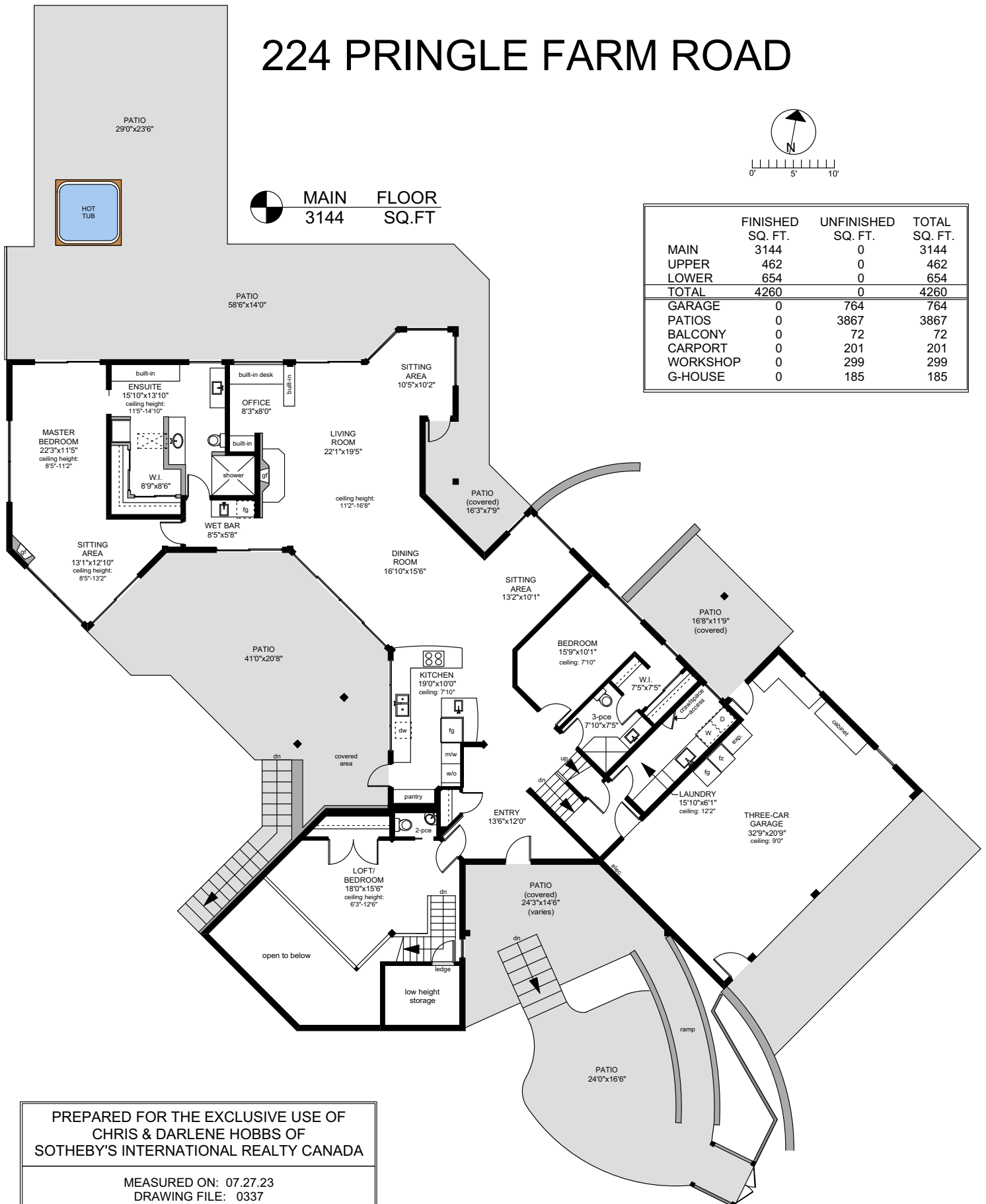


224 PRINGLE FARM ROAD



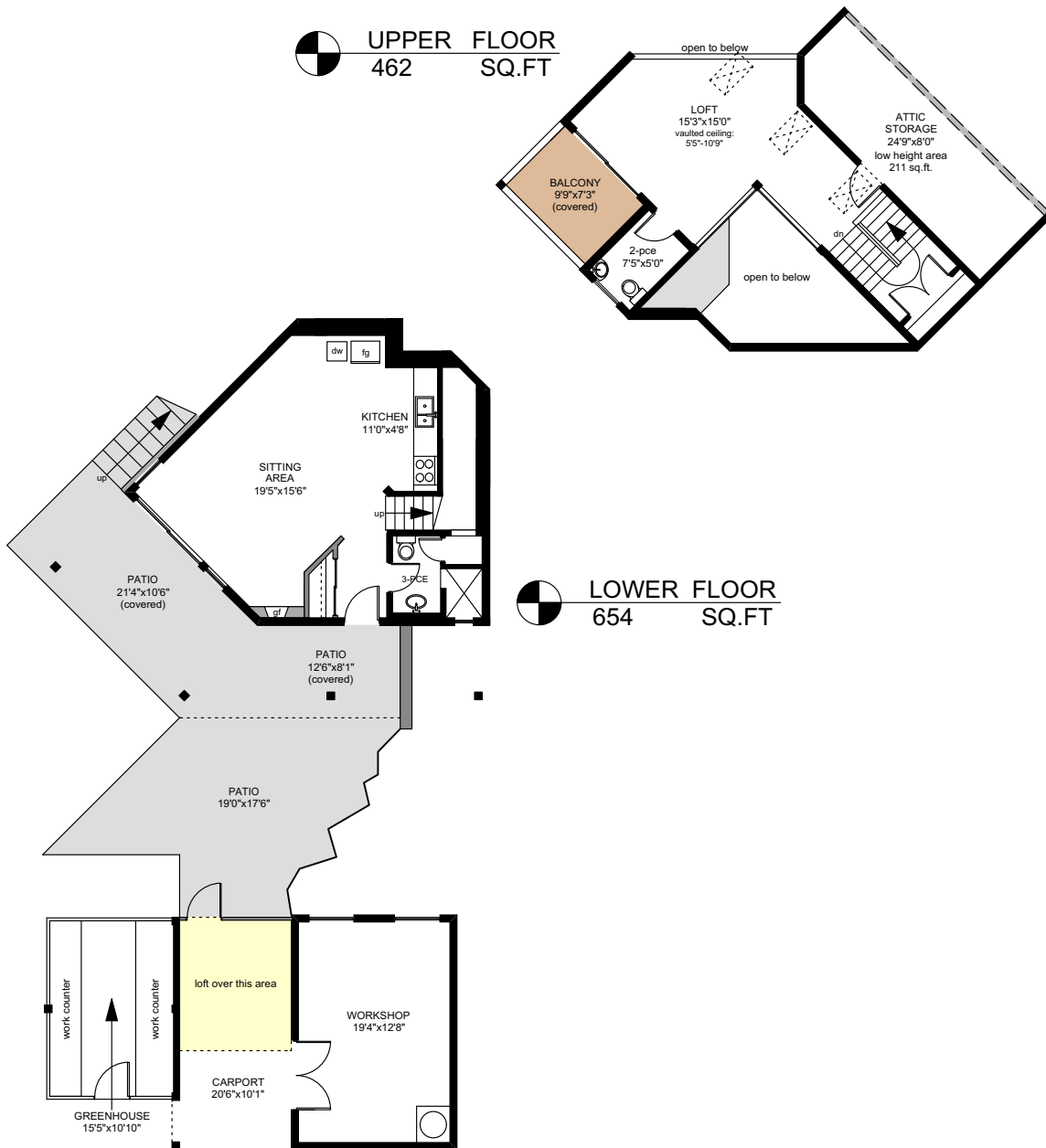
MAIN FLOOR
3144 SQ.FT

	FINISHED SQ. FT.	UNFINISHED SQ. FT.	TOTAL SQ. FT.
MAIN	3144	0	3144
UPPER	462	0	462
LOWER	654	0	654
TOTAL	4260	0	4260
GARAGE	0	764	764
PATIOS	0	3867	3867
BALCONY	0	72	72
CARPORT	0	201	201
WORKSHOP	0	299	299
G-HOUSE	0	185	185



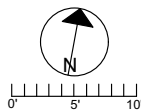
NOTE: This floor plan is provided by Chris & Darlene Hobbs of Sotheby's International Realty Canada as a convenient reference only, and is not to be relied upon as accurate. Prospective Buyers must satisfy themselves not only of the actual measurements, but also to the status of any finished space shown on this floor plan, specifically in relation to minimum ceiling height for habitable rooms required by the BC Building Code, allowable finished floor area in relation to current zoning, and determination if space was developed with necessary municipal permits.

224 PRINGLE FARM ROAD



PREPARED FOR THE EXCLUSIVE USE OF
CHRIS & DARLENE HOBBS OF
SOTHEBY'S INTERNATIONAL REALTY CANADA

MEASURED ON: 07.27.23
DRAWING FILE: 0337



	FINISHED SQ. FT.	UNFINISHED SQ. FT.	TOTAL SQ. FT.
MAIN	3144	0	3144
UPPER	462	0	462
LOWER	654	0	654
TOTAL	4260	0	4260
GARAGE	0	764	764
PATIOS	0	3867	3867
BALCONY	0	72	72
CARPORT	0	201	201
WORKSHOP	0	299	299
G-HOUSE	0	185	185

NOTE: This floor plan is provided by Chris & Darlene Hobbs of Sotheby's International Realty Canada as a convenient reference only, and is not to be relied upon as accurate. Prospective Buyers must satisfy themselves not only of the actual measurements, but also to the status of any finished space shown on this floor plan, specifically in relation to minimum ceiling height for habitable rooms required by the BC Building Code, allowable finished floor area in relation to current zoning, and determination if space was developed with necessary municipal permits.