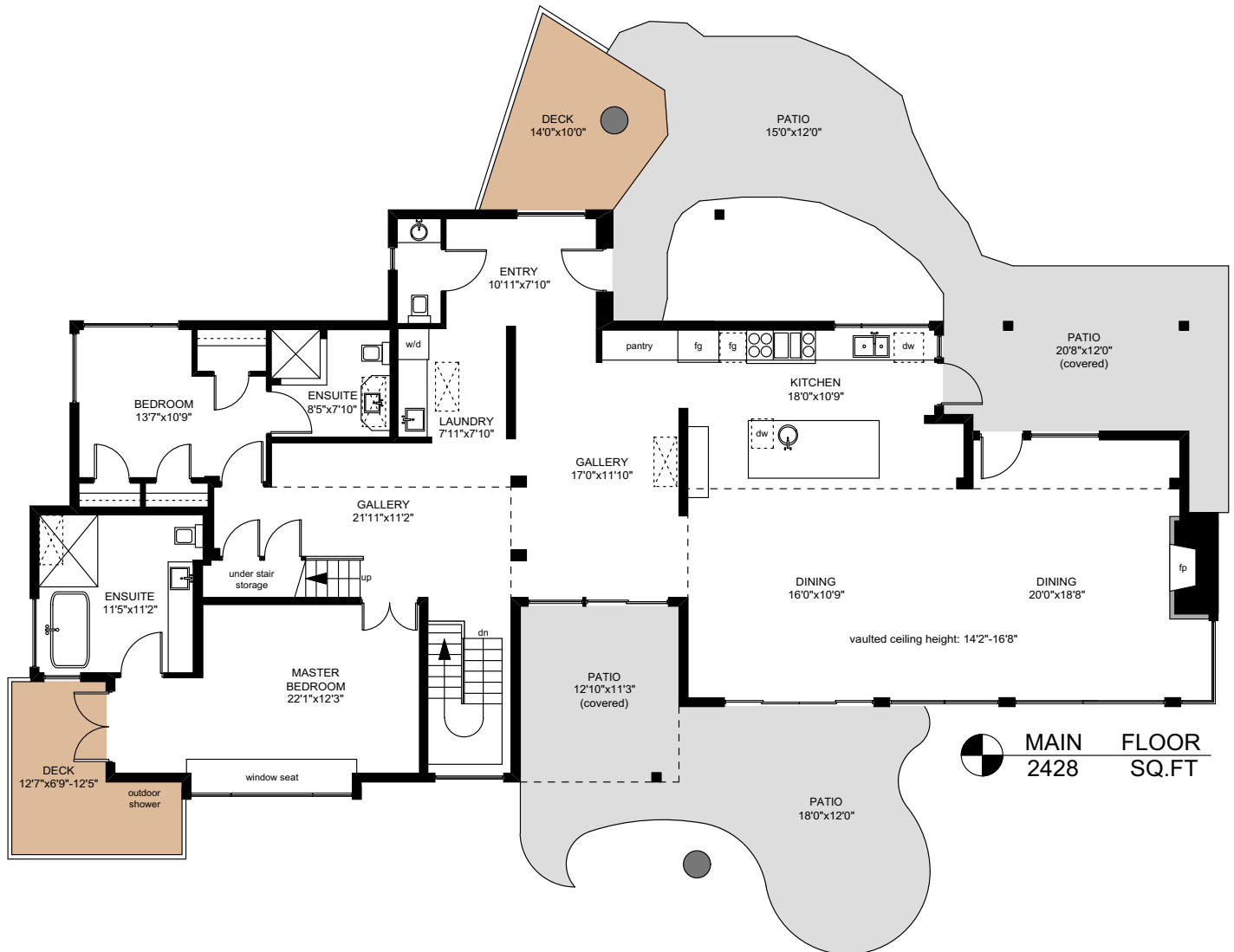
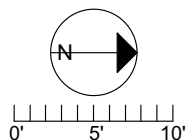


# 572 ANNA'S DRIVE



MAIN FLOOR  
2428 SQ.FT

	FINISHED SQ. FT.	UNFINISHED SQ. FT.	TOTAL SQ. FT.
MAIN	2428	0	2428
UPPER	94	0	94
LOWER	1024	88	1112
TOTAL	3546	88	3634
PATIOS	0	1005	1005
DECKS	0	240	240

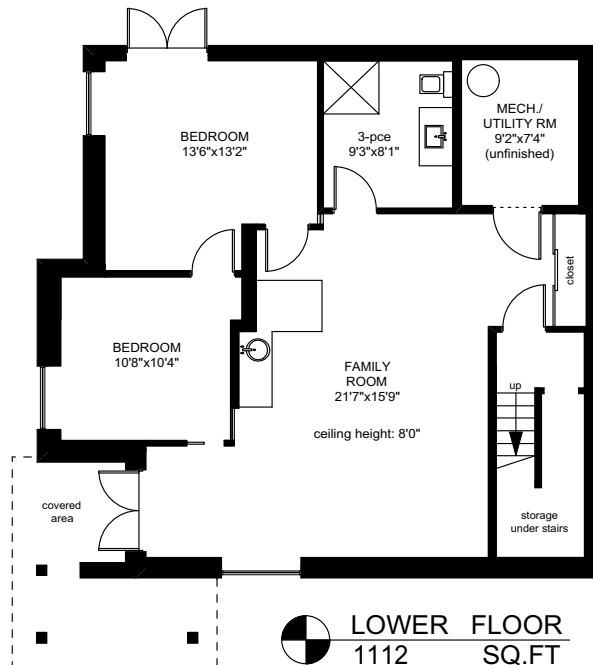
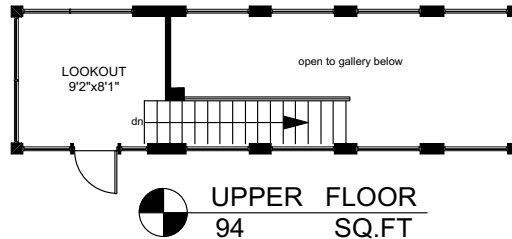


PREPARED FOR THE EXCLUSIVE USE OF  
CHRIS & DARLENE HOBBS OF  
SOTHEBY'S INTERNATIONAL REALTY CANADA

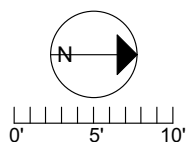
MEASURED ON: 04.07.23  
DRAWING FILE: 0333

NOTE: This floor plan is provided by Chris & Darlene Hobbs of Sotheby's International Realty Canada as a convenient reference only, and is not to be relied upon as accurate. Prospective Buyers must satisfy themselves not only of the actual measurements, but also to the status of any finished space shown on this floor plan, specifically in relation to minimum ceiling height for habitable rooms required by the BC Building Code, allowable finished floor area in relation to current zoning, and determination if space was developed with necessary municipal permits.

# 572 ANNA'S DRIVE



	FINISHED SQ. FT.	UNFINISHED SQ. FT.	TOTAL SQ. FT.
MAIN	2428	0	2428
UPPER	94	0	94
LOWER	1024	88	1112
TOTAL	3546	88	3634
PATIOS	0	1005	1005
DECKS	0	240	240



PREPARED FOR THE EXCLUSIVE USE OF  
CHRIS & DARLENE HOBBS OF  
SOTHEBY'S INTERNATIONAL REALTY CANADA

MEASURED ON: 04.07.23  
DRAWING FILE: 0333

NOTE: This floor plan is provided by Chris & Darlene Hobbs of Sotheby's International Realty Canada as a convenient reference only, and is not to be relied upon as accurate. Prospective Buyers must satisfy themselves not only of the actual measurements, but also to the status of any finished space shown on this floor plan, specifically in relation to minimum ceiling height for habitable rooms required by the BC Building Code, allowable finished floor area in relation to current zoning, and determination if space was developed with necessary municipal permits.